

**WESTERN AUSTRALIAN AMATEUR
FOOTBALL LEAGUE (INC)**

BY-LAWS

April 2018



Gate 6, Domain Stadium, Subiaco Road, Subiaco
PO Box 275, Subiaco WA 6904
ABN: 92 908 712 104
www.waaf.com.au

PAGE LEFT BLANK INTENTIONALLY

WAAFL BY-LAWS

- 1. Introduction**
- 2. Definitions**
- 3. Summary of Amendments**
- 4. Summary of Match Rules**

SECTION 1 SPIRIT OF THE GAME

SECTION 2 COMPETITIONS

PART A GENERAL COMPETITION CONDITIONS

By-laws applicable across Mens, Womens and All Abilities competitions.

PART B MENS COMPETITION

By-laws specific to Mens competitions. To be read in conjunction with Part A.

- Senior Mens Grades
- Colts Grades
- F-Grade

PART C WOMENS COMPETITION

By-laws specific to Womens competitions. To be read in conjunction with Part A.

- Senior Womens Grades
- Development Grades

PART D ALL ABILITIES (INTEGRATED FOOTBALL)

By-laws specific to All Abilities competitions (Integrated Football). To be read in conjunction with Part A.

SECTION 3 ADMINISTRATIVE PROVISIONS

SECTION 4 SUB-BOARDS (COMMITTEES)

SECTION 5 AWARDS & HONOURS

SECTION 6 REPRESENTATIVE TEAMS

SECTION 7 APPLICATION FOR MEMBERSHIP

INDEX

SECTION 1	SPIRIT OF THE GAME	REF: PREVIOUS BY LAWS	PAGE
By law 1.1	Spirit of the Game	New	8
By law 1.2	Amateur Status	Part 1, By law 1	8
SECTION 2	COMPETITIONS		
PART A	GENERAL COMPETITION CONDITIONS		
By law A2.1	Annual team nominations	Part 1, By law 3	12
By law A2.2	Player registration	Part 1, By law 5	12
By law A2.3	Cancellation of registration	Part 1, By law 7	13
By law A2.4	Player transfer and clearance	Part 1, By law 8	13
By law A2.5	Dual registration and permits	Part 1, By law 6	15
By law A2.6	Ineligible players	Part 1, By law 9	17
By law A2.7	Matches	Part 1, By law 11	18
By law A2.8	Night matches	Part 1, By law 13	19
By law A2.9	Forfeits	Part 1, By law 14	19
By law A2.10	Determining Finalists (Finals)	Part 1, By law 34.4-5-6-7	20
By law A2.11	Playing surface	Part 1, By law 15	21
By law A2.12	Pre-match provisions	Part 1, By law 16	21
By law A2.13	Playing uniform	Part 1, By law 17	23
By law A2.14	Coaches	Part 1, By law 19	24
By law A2.15	Umpires	Part 1, By law 20	25
By law A2.16	Support personnel	Part 1, By law 21	26
By law A2.17	Duties during, post-match provisions	Part 1, By law 22	28
By law A2.18	Counting of players (head count)	Part 1, By law 23	29
By law A2.19	Timekeepers	Part 1, By law 24	29
By law A2.20	Bleeding	Part 1, By law 27	30
By law A2.21	Concussion	Part 1, By law 28	30
By law A2.22	Extreme heat	Part 1, By law 29	31
By law A2.23	Lightning	Part 1, By law 30	31
By law A2.24	Vilification	Part 1, By law 31	31
By law A2.25	Media comment, use of social media	Part 1, By law 32	32
By law A2.26	Crisis management	Part 1, By law 33	33
By law A2.27	Order off rule	Part 1, By law 25	33
By law A2.28	Melee	Part 1, By law 26	34
By law A2.29	Reporting players and officials	Part 1, By law 35	35
Schedule A1	Fines	Schedule 1	39
Schedule A2	Notice of Investigation form	Schedule 4	40
PART B	MENS COMPETITION		
By law B2.1	Competition structure	Part 1, By law 2	41
By law B2.2	Team grading, relegation & promotion	Part 1, By law 4	42
By law B2.3	Teams	Part 1, By law 18	42
By law B2.4	Selection of players between teams	Part 1, By law 10	43
By law B2.5	Scheduled start and playing times	Part 1, By law 12	43
By law B2.6	Finals eligibility	Part 1, By law 34	44
By law B2.7	Modified match conditions – F Grade Mens	New	45
Schedule B1	Mens playing uniform specifications	Schedule 2	46
Schedule B2	Mens support personnel uniform specs	Schedule 3	47
PART C	WOMENS COMPETITION		
By law C2.1	Competition structure	New	48
By law C2.2	Team grading, relegation & promotion	New	48
By law C2.3	Teams	New	48
By law C2.4	Selection of players between teams	New	49
By law C2.5	Scheduled start and playing times	New	49
By law C2.6	Finals eligibility	New	50
By law C2.7	Modified match conditions - development grades	New	51
Schedule B1	Womens playing uniform specifications	New	52
Schedule B2	Womens support personnel uniform specs	New	53
PART D	ALL ABILITIES (INTEGRATED FOOTBALL)		
By law D2.1	Competition structure	Part 7, By law 1	54
By law D2.2	Team grading, relegation & promotion	New	54
By law D2.3	Teams	Part 7, By law 2	54
By law D2.4	Selection of players between teams	New	55
By law D2.5	Scheduled start and playing times	Part 7, By law 3.1	55
By law D2.6	Finals eligibility	New	55

By law D2.7	Modified match conditions – Integrated Football	Part 7, By law 3	56
By law D2.8	Coaching	Part 7, By law 4	56
By law D2.9	Umpiring	Part 7, By law 5	56
Schedule D1	Integrated football playing uniform specifications	New	57
Schedule D2	Integrated football support personnel uniform specs	New	58
SECTION 3 ADMINISTRATIVE PROVISIONS			
By law 3.1	Payment default, unfinancial with WAAFL	Part 2, By law 1	59
By law 3.2	Club affiliation fees	Part 2, By law 2	59
By law 3.3	Payment of fines	Part 2, By law 3	59
By law 3.4	Ground hire	Part 2, By law 4	59
By law 3.5	AGM minutes and financial reports	Part 2, By law 5	59
By law 3.6	Club office bearers	Part 2, By law 6	60
By law 3.7	Member club meetings, compulsory returns	Part 2, By law 7	60
By law 3.8	Agreements and sponsorships	Part 2, By law 8	60
By law 3.9	Act or omission	Part 2, By law 9	60
SECTION 4 SUB BOARDS (COMMITTEES)			
By law 4.1	Finance and Risk Committee	Part 3, By law 1	61
By law 4.2	Heritage and Awards Committee	Part 3, By law 2	61
By law 4.3	Competition and Integrity Advisory Committee	Part 3, By law 5	62
By law 4.4	Integrated Football Advisory Committee	Part 3, By law 7	63
By law 4.5	Female Football Advisory Committee	New	63
SECTION 5 AWARDS AND HONOURS			
By law 5.1	WAAFL Life Membership	Part 4, By law 1	65
By law 5.2	Player milestone recognition	Part 4, By law 2	65
By law 5.3	Champion Club Award	Part 4, By law 3	65
By law 5.4	Champion Colts Club Award	Part 4, By law 4	65
By law 5.5	Premiership pennants and trophies	Part 1, By law 34.3	66
By law 5.6	Medals for outstanding play	Part 4, By law 5	66
By law 5.7	Leading goal kicker awards	Part 4, By law 6	67
By law 5.8	Awards for service/support	Part 4, By law 7	67
By law 5.9	Administrator of the Year	Part 4, By law 8	67
By law 5.10	President’s Award	Part 4, By law 9	67
By law 5.11	Coach of the Year	Part 4, By law 10	67
SECTION 6 REPRESENTATIVE TEAMS			
By law 6.1	Representative teams	Part 5, By law 1	68
By law 6.2	State coaches and support personnel	Part 5, By law 2	68
By law 6.3	State coach selection	Part 5, By law 3	68
By law 6.4	State jumper	Part 5, By law 4	68
By law 6.5	State game umpires	Part 5, By law 5	69
By law 6.6	Financial contribution	Part 5, By law 6	69
SECTION 7 APPLICATION FOR MEMBERSHIP			
By law 7.1	Probationary club	Part 6, By law 1	70
By law 7.2	Application for membership	Part 6, By law 2	70

1. INTRODUCTION

These By-laws are made under the authority of the Rules of the Western Australian Amateur Football League (Inc) ("WAAFL") to ensure a fair and equitable competition.

The By-laws contain various directions and requirements of the WAAFL and are binding on clubs, players, club officials, umpires, committees and tribunals. They are to be interpreted in accordance with, and are subject to, the Rules of the WAAFL.

By-laws are made for the dominant purpose of ensuring a safe and fair system or framework within which amateur football may be regulated and conducted.

The Laws of Australian Football, and AFL Regulations and policies shall prevail, unless expressed otherwise in the WAAFL's Rules and By-laws.

It should be recognised that the WAAFL believes in and operates under strict equity guidelines. Any reference to a person as *he* or *his*, *she* or *her* in this document is meant to read as unisex.

Governing documents

The **Constitution of the Western Australian Amateur Football League (Inc)** is the authority under and through which we govern and manage the business of the WAAFL.

The **By-laws of the Western Australian Amateur Football League (Inc)** is the framework within which amateur football is regulated and conducted.

The WAAFL also makes **policies**. Such policies formalise the WAAFL's position on specific issues and/or details the required procedures considered important to effect competent and prudent management and operations.

The Board also pass **resolutions**. Resolutions are a procedural means of formalising and recording a decision, rule, policy or position on a specific issue.

Sub-Boards such as Tribunals pass **findings**. Findings are a procedural means of formalising and recording a decision and penalty in accordance with these By-laws and the Laws of Australian Football.

Sub-Boards such as committees and forums may provide **recommendations** to the Board and General Manager to act on. These recommendations are non-binding, but provide a procedural means of formalising and recording advice to the Board or General Manager on a specific issue.

2. DEFINITIONS

<i>Board</i>	means the Board of the WAAFL.
<i>Board Member</i>	means a member of the Board of the WAAFL.
<i>Competition Integrity Officer</i>	means the Competition Integrity Officer appointed by the Board.
<i>Club</i>	means a club playing or approved to play in the WAAFL.
<i>Club Official</i>	means a person elected or appointed as a club committee member, coach, team manager, support personnel, timekeeper or any other person acting in an official capacity for a club.
<i>Club Appointed Umpire</i>	means an umpire appointed by a club to officiate a match.
<i>Coach</i>	means the senior or head coach of a team. All other coaches are deemed assistant coaches.
<i>General Manager</i>	means the General Manager (or Executive Officer or other title) of the WAAFL and includes any person acting in that position.
<i>Player</i>	means a person registered to play in the WAAFL.
<i>Official</i>	means Club Official, Umpiring Official or WAAFL Official, as the context requires.
<i>Tribunal</i>	means the WAFC Perth Community Football Tribunal or similar body.
<i>Umpiring Official</i>	means Umpire Coaches and Match Day Coaches appointed by the WAAFL or WAFC.
<i>WAAFL Official</i>	means a Board Member, staff or any person appointed by the WAAFL to act on its behalf.
<i>WAAFL</i>	means the incorporated body, the Western Australian Amateur Football League Inc.
<i>WAAFL Appointed Umpire</i>	means an umpire appointed by the WAAFL or WAFC to officiate a match.
<i>Whistleblower Policy</i>	means the Whistleblower Policy approved by the Board on 1 February 2016, as varied from time to time and with such variations duly communicated to Clubs.

3. SUMMARY OF AMENDMENTS

This summary reflects the by-law amendments in accordance with the following WAAFL Board Minutes.

ISSUED	BOARD MEETING	MINUTE ITEM NO.	BY-LAW AMENDED
26 Feb 2013	29 Jan 2013	3.2.3	Replace By-Laws 30/7/2012.
1 May 2013	22 April 2013	3.2.2	Re-issued.
10 Jan 2014	18 Dec 2013	3.2.4	Re-issued.
29 April 2014	28 April 2014	4.2	Re-issued.
5 Feb 2015	2 Feb 2015	4.1	Re-issued.
16 April 2015	13 April 2015	4.2	Re-issued.
23 April 2015	23 April 2015	Circular resolution	Re-issued.
26 May 2015	25 May 2015	4.1	Re-issued.
1 Jan 2016	30 Nov 2015	4.3 & Circular resolution	Re-issued.
13 July 2016	4 July 2016	4.2	Re-issued.
1 Dec 2016	26 Nov 2016	4.1	Re-issued.
22 nd Feb 2017	20 th Feb 2017	4.1	Re-issued.
24 th April 2017	21 st April 2017	Circular resolution	Re-issued.
4 th July 2017	3 rd July 2017	2.1	Re-issued.
1 st March 2018 (This issue)	12 th Feb 2018	4.2	Replaced By-laws 4/7/2017. For amendments refer to Circular 21, 2017-18.
20 th April 2018	19 th April 2018	Circular resolution	<ul style="list-style-type: none"> Amend By-law C2.3.1 Womens team composition maximum increased from 22 to 25 players. Amend By-law C2.6.1 Finals eligibility reduced from 5 matches to 4 matches.

4. SUMMARY OF MATCH RULES

This is a summary of match rules and is intended as a guide only. It is not comprehensive and where there is any inconsistency between the information in this table and elsewhere in these By-Laws, then the By-Laws in Section 2 shall take precedence

	SENIOR MENS					COLTS	SENIOR WOMEN		ALL ABILITIES (INTEGRATED)
	A/B/C1/C2/C3/C4	AR/BR/C1R/C2R/C3R	C4R	D, E Grades	F Grade		A/B	Dev. Grade	
Age	16+	16+	16+	16+	28+	16-20	17+	17+	16+
Players	18-a-side (14 min/22 max)	18-a-side (14 min/22 max)	18-a-side (14 min/22 max)	18-a-side (14 min/22 max)	16-a-side (14 min/22 max)	18-a-side (14 min/25 max)	18-a-side (14 min/25 max)	15-a-side (9 min/18 max)	18-a-side (12 min/25 max)
Playing times	4 x 25 mins	4 x 20 mins	4 x 20 mins	4 x 20 mins	4 x 15 mins	4 x 20 mins	4 x 15 mins	2 x 20 mins	4 x 12 mins
Breaks	5/15/7 mins	5/15/7 mins	5/15/7 mins	5/15/7 mins	5/10/5 mins	5/15/7 mins	5/10/5 mins	10 mins	3/7/3 mins
Even up Rule	No	No	Yes	No	Yes	Yes	Yes	Yes	Yes
Out of bounds					Last possession rule			Last possession rule	
Bouncing								A player can bounce the ball once.	A player can bounce the ball twice.
Coaching									Max 2 per team allowed on field.
Umpires (min)	2F-2B-2G	2F-2B-2G	2F-2B-2G	2F-2B-2G	2F-2G	2F-2B-2G	2F-2B-2G	1F-2G	2 field/2 goal/2 boundary
Runners	Max 2 per team	Max 2 per team	Max 2 per team	Max 2 per team	Max 2 per team	Max 2 per team	Max 2 per team	Max 2 per team	Max 2 per team
Water	Max 4 per team	Max 4 per team	Max 4 per team	Max 4 per team	Max 4 per team	Max 4 per team	Max 4 per team	Max 4 per team	Max 4 per team
Trainer	Mandatory	Mandatory	Mandatory	Mandatory	Mandatory	Mandatory	Mandatory	Mandatory	Mandatory
Other					High graded senior team required to nominate			Wrap tackle only No soccering Reduced oval	

SECTION 1: SPIRIT OF THE GAME

BY-LAW 1.1 SPIRIT OF THE GAME

- 1.1.1 The objective of the WAAFL's Spirit of the Game is to recognise that there is a critical element of the conduct of a game of Australian rules football that cannot be the subject of written rules nor of regulation by the administrators of the competition.
- 1.1.2 This element is the fairness, decency and honesty which coaches, players, umpires and spectators must bring to the conduct of the game on every occasion and in all situations, which arise in the conduct of the game.
- 1.1.3 Football games are played to be won and football is a contact sport so it is expected that games will be hard fought and physically demanding. However, the WAAFL also requires that each game is played within both the written rules of the game and the Spirit of the Game.
- 1.1.4 Each participant is personally responsible for ensuring his or her behaviour is fair, decent and honest.
- 1.1.5 The desire for victory must not outweigh:
- a) the ideals of sportsmanship which are the foundation of the game, and
 - b) the reputation and integrity of the WAAFL and its competitions.
- 1.1.6 At the end of a game each person involved with the winning team should honestly be able to say that the team played fairly, decently and honestly, and behaved in a sportsmanlike manner in victory.
- 1.1.7 At the end of a game each person involved with the losing team should honestly be able to say that the team played fairly, decently and honestly, and behaved in a sportsmanlike manner in defeat.
- 1.1.8 Even in the heat of the game all participants must conduct themselves fairly, decently and honestly and with respect for:
- a) the opposition,
 - b) the WAAFL, and
 - c) the game of Australian rules football.

BY-LAW 1.2 AMATEUR STATUS

- 1.2.1 A player is only permitted to participate in the WAAFL as an AMATEUR.
- 1.2.2 The WAAFL defines an AMATEUR as one who does not receive or agree to receive, either directly or indirectly, any remuneration or reward whatsoever (whether by match payments or expenses or otherwise) in respect to their participation as a player in the WAAFL.
- 1.2.3 Any club which offers to make payment or makes payment, either directly or indirectly including via a third party, by remuneration, earnings or reward whatsoever whether by way of match payments, sponsorship, reimbursement of expenses, including travel expenses or otherwise to any person to play in the WAAFL (except as otherwise provided for in these By-laws) shall:
- a) be ineligible for finals in any grade in the current football season;

- b) have its League team relegated to the grade below their current grade for the following football season and be ineligible for finals in that grade in the following year; and
- c) be fined a sum not exceeding forty thousand dollars (\$40,000).

1.2.3.1 Subject to By-law 1.2.14, the player who has received such remuneration shall:

- a) be fined a sum not exceeding \$2000; and
- b) have his registration to play cancelled pursuant to By-law A2.3 or until such time as a new application for registration has been lodged with and approved by the General Manager.

1.2.4 Any person who requests payment from a club official, coach or club sponsor to play in the WAAFL, either directly or indirectly including via a third party, by remuneration, earnings or reward whatsoever whether by way of match payments, sponsorship, reimbursement of expenses, including travel expenses or otherwise except as set out in By-law 1.2.6 shall:

- a) be fined a sum not exceeding \$2000; and
- b) have his application for registration not approved or his registration to play cancelled pursuant to By-law A2.3 until such time as a new application for registration has been lodged with and approved by the General Manager.

1.2.4.1 Where a request is made for such payment, the club official, coach or club sponsor shall report to the General Manager the name of the person requesting payment. A club who fails to report a request shall be fined a sum not exceeding \$1000.

1.2.5 Any third party such as a sponsor which offers to make payment or makes payment, either directly or indirectly by remuneration, earnings or reward whatsoever whether by way of match payments, sponsorship, reimbursement of expenses, including travel expenses or otherwise to any person to play in the WAAFL except as set out in By-law 1.2.6 shall not be permitted to display their logo or branding at any WAAFL match which shall include but not be limited to the playing uniform and signage within and around the club until such time as the General Manager determines otherwise.

1.2.6 Notwithstanding By-laws 1.2.2 and 1.2.3, clubs are permitted to provide for and make match day awards in recognition of performance not exceeding \$500 in aggregate for each team and \$200 for any player. Any club directed to do so in writing by the General Manager or Competition Integrity Officer is required to submit a list of players who have received match day awards stating the value of the awards and the match or matches for which the awards were made. Any club providing awards or any player receiving awards in a greater amount than as determined by these By-laws to be the maximum sum allowed will be in breach of By-law 1.2.3 or 1.2.3.1 as the case may be and be subject to the penalties therein prescribed.

1.2.7 Any club official, coach, member or player upon being directed to do so by the General Manager, Competition Integrity Officer, Disciplinary Committee or appellate body shall be required to answer questions directed to him or her and if required to do so, verify the answers by statutory declaration.

If any person upon being directed to do so refuses or fails to sign a statutory declaration, in the case of a club official, coach or member the refusal or failure will be deemed to be a breach by the club of By-law 1.2.3, and in the case of a player be deemed to be a breach of By-law 1.2.3.1, and both the club and player

will be subject to the prescribed penalties in By-law 1.2.3 or 1.2.3.1 as the case may be. The purpose of having information verified by statutory declaration is to ensure that persons providing false information may be subsequently prosecuted for declaring a false declaration. The General Manager, Competition Integrity Officer, Disciplinary Committee or appellate body is not required to have answers verified by statutory declaration or to give any special weight to evidence verified by statutory declaration in determining whether a breach of this By-law 1.2 has occurred and may prefer evidence which has not been verified by statutory declaration in its absolute discretion.

- 1.2.8 Senior and non-playing assistant coaches may be remunerated for their respective services as a coach. Notwithstanding By-laws 1.2.2 and 1.2.3, the senior coach of each team in a club is permitted to be remunerated for his knowledge and service as a coach and play without forfeiting his amateur status. For the avoidance of doubt, an assistant coach is not permitted to be remunerated as a coach and play for any of the club's teams.
- 1.2.9 Only one senior coach is permitted for each team at the club. A club is required to provide the General Manager with a written list confirming the senior and assistant coaches for each team in the club prior to the commencement of each season or by 1 April, whichever is the later. Failure to do so will incur a fine as prescribed in Schedule A1.
- 1.2.10 Any coach who is not named in the written list and receives remuneration will be ineligible to coach and be in breach of By-law 1.2.3.1. The club will also be deemed to be in breach of By-law 1.2.3.
- 1.2.11 The maximum remuneration a club is permitted to make for coaches in respect of any one team in a season is \$15,000. A club is not permitted to remunerate its coaches beyond the total amount which is reviewed and prescribed by the Board for adoption each season. Each club is required to submit to the General Manager in writing full details of the remuneration packages paid (including incentives and bonuses) to each of its coaches by no later than the commencement of each season or 1 April, whichever is the later. If any club fails or refuses to comply with the requirement to provide written details of its coaches' remuneration packages, the club will be ineligible to play until the requirement is complied with.
- 1.2.12 A fine not exceeding \$10,000 may be imposed by the General Manager, Competition Integrity Officer or Disciplinary Committee upon any club who makes, or coach receives, remuneration in an amount greater than fixed by this By-law and the coach shall be suspended from coaching any WAAFL club in any capacity for a period of five years from the imposition of the suspension.
- 1.2.13 Register of Interests**
Any other person at a club who receives remuneration either directly or indirectly for any other role or service to the club except as set out in By-law 1.2.6 will be ineligible to play in the WAAFL except where a written application has been submitted and exemption approved by the Competition Integrity Officer. The Competition Integrity Officer may approve or reject an application as he deems appropriate. A non-exempted person who receives remuneration and plays for a club will result in penalties as set out in By-laws 1.2.3 and 1.2.3.1. The Competition Integrity Officer will keep a register of all such exemptions approved by him (Register of Interests). All applications are to be submitted online via the Register of Interests.

1.2.14 Whistleblower

Where a player provides information in accordance with the Whistleblower Policy the Competition Integrity Officer or Disciplinary Committee may, at its absolute discretion:

- a) waive the fine that may otherwise be payable by that player pursuant to By-law 1.2.3.1(a);
- b) waive the cancellation of the player's registration that may otherwise be required pursuant to By-law 1.2.3.1(b); and
- c) permit the player to transfer to another club in accordance with By-law A2.4 (including where the former club could otherwise refuse the transfer) and continue to participate as a player in the WAAFL competition, provided that the player verifies by statutory declaration that he is doing so as an AMATEUR.

SECTION 2: COMPETITIONS

PART A: GENERAL COMPETITION CONDITIONS

BY-LAW A2.1 ANNUAL TEAM NOMINATIONS

A2.1.1 Nomination process

- a) All clubs shall annually nominate teams for each competition by the nomination date as prescribed by the General Manager.
- b) Team nominations will not be accepted after the nomination date, unless approved by the General Manager at his absolute discretion.
- c) Where a club nominates a team after the nomination date, the General Manager may apply a late nomination fee as prescribed in Schedule A1.
- d) The General Manager has the right not to accept any team's nomination or may at his absolute discretion apply such additional conditions as he deems appropriate for the team's nomination to be accepted.
- e) A team accepted to play in the nominated season shall pay the affiliation fee as specified by the WAAFL.
- f) Where a senior mens or womens team forfeits three qualifying games in one season, the club is not permitted to re-nominate that team for the following season.
- g) If a club withdraws a team under By-law A2.9.8 in a season:
 - i. the club is not permitted to re-nominate that team for the following season; and
 - ii. the highest team of that club is only permitted to participate in a lower graded competition the following season.
- h) A club wishing to nominate a F Grade mens team shall nominate at least one senior mens team in a higher grade.

A2.1.2 Withdrawal of a team

Any club which withdraws a nominated team after the nomination date shall pay the full team affiliation fee for that season.

BY-LAW A2.2 PLAYER REGISTRATION

A2.2.1 A player must be registered in the WAAFL to play in any WAAFL sanctioned match.

A2.2.2 A player can only be registered to play for one club of the WAAFL at one time.

A2.2.3 To be registered, a person shall:

- a) register online using the WAAFL Player Registration system (Footyweb); or
- b) temporarily register using a Type 2 Local Interchange Permit.

A2.2.4 If the registration is subject to a Player Transfer and Clearance, the player is not permitted to register with the destination club until the transfer is approved.

A2.2.5 Any player whose last club is now disbanded or amalgamated with another club and is unfinancial with the WAAFL, shall pay into the funds of the WAAFL an amount as determined by the General Manager against the sum owing by the unfinancial club before a registration shall be granted providing he was a registered player of the unfinancial club in the year of disbandment or amalgamation.

- A2.2.6 Any person who makes a false declaration on his application for registration shall have his registration cancelled and fined as prescribed in Schedule A1.
- A2.2.7 The General Manager at his own discretion and without giving reason may not accept an application for registration or may apply additional conditions for an application for registration.

BY-LAW A2.3 CANCELLATION OF REGISTRATION (DE-REGISTRATION)

- A2.3.1 A player's registration with the WAAFL is cancelled if:
- a) The player forfeits his amateur status.
 - b) The player has transferred his playing rights and is cleared to play in a club in another League/Association.
 - c) The player whilst playing in the WAAFL has accumulated a combined total of 12 weeks suspension or been found guilty of a reportable offence on three separate occasions in any one year or receives a suspension of five weeks or more for any one incident resulting from a reportable offence.
 - d) The player makes a false declaration on his application for registration or transfer and clearance.
 - e) The player has not played in the WAAFL for 24 months.
 - f) The General Manager decides accordingly.
- A2.3.2 A player's registration may be cancelled and no further registration permitted with the WAAFL if he has accumulated a combined total of sixteen weeks suspension or greater in his football career after attaining the age of 16 years.
- A2.3.3 A player whose registration has been cancelled may apply for a new registration.

BY-LAW A2.4 PLAYER TRANSFER AND CLEARANCE

A player who wishes to play with another club must finalise his transfer and clearance online via Footyweb before he is eligible to play.

A2.4.1 Transfer application period

Player transfer applications may only be lodged via Footyweb between 1st November and 8pm (WST) on 30th November, and 1st February and 8pm (WST) on 30th June in a given year.

A2.4.2 Transfer application process

- a) A player transfer must be initiated by the destination club lodging the transfer online via Footyweb with the player's last club (i.e. immediate former club).
- b) The former club has six business days commencing from when the application to transfer is lodged in Footyweb to object to the transfer application.
- c) The former club can approve the transfer at any time within the six business days via Footyweb.
- d) If the former club does not object or fails to respond within six business days the transfer application will be automatically approved and the player cleared to register with the destination club. Once a player's transfer application has been approved his playing history including Tribunal records will be automatically sent to the League/Association to which the destination club is affiliated via Footyweb.
- e) The player shall finalise his transfer by registering online using the WAAFL Player Registration system via Footyweb with his destination club.

- f) Armed Forces personnel, and interstate and country players (or the spouse, de facto or parent/guardian of the player) transferred in the course of their duties or employment with the same employer (excluding self-employees) are permitted to lodge a Type 2 Local Interchange Permit online via Footyweb after the close of the transfer application period and is subject to approval being granted by the former club and League/Association.

A2.4.3 Transfer refusal

- a) Subject to By-law 1.2.14(c), the former club can refuse a transfer within the six business days via Footyweb where the club can substantiate the player:
 - i. is indebted/owes money to the club for the season in which he last played at the club; and/or
 - ii. is in possession of club property (e.g. jumper) that needs to be returned; and/or
 - iii. wishes to withdraw his transfer application. The player must complete the Player Withdrawal of Transfer Form and submit the form to the WAAFL within six business days from the date on which the transfer application was lodged.
- b) A club refusing to transfer a player must provide evidence to the General Manager within 72 hours of the refusal to substantiate the club's claim. Failure to provide such evidence may result in the General Manager re-opening and approving the transfer.
- c) A player refused a clearance solely by reason of him being unfinancial may submit a further transfer application upon paying his outstanding subscriptions.
- d) A player selected as a member of a WAAFL representative team shall not be granted a clearance to another club or League/Association until all subscriptions incurred as a member of the team are paid.

A2.4.4 Appeal refusal

Where the player disputes the reason for a transfer refusal, the player's destination club must resolve the dispute with the former club. Where a dispute between the parties cannot be resolved, the appeal will be determined by the General Manager or be subject to the National AFL Player Transfer Regulations.

A2.4.5 Suspended players

A player under disqualification or suspension on or prior to the 30th June may lodge a transfer application which will be processed on completion of the disqualification or suspension.

A2.4.6 24 Month Rule

A player who can satisfy the General Manager he has not played competitive football in the previous 24 months and wishes to play at another club can apply for registration with that club at any time. The player's former club cannot object to the transfer.

BY-LAW A2.5 DUAL REGISTRATION AND PERMITS

The WAAFL has Interchange Agreements for the use of Type 2 Local Interchange Permits with the WAFL, WACFL, WAWFL, AFL Masters WA and WAFC/DFDC (Juniors).

Type 1 Match Day Permits and Type 3 Temporary Transfer Permits are not accepted in the WAAFL.

A Type 2 Local Interchange Permit which has been lodged and approved for the respective season cannot be withdrawn or amended after 30 June in the given year.

A2.5.1 WAAFL and WAFL (Type 2 Local Interchange Permit)

- a) A player is allowed to play with a WAAFL club and a WAFL club in the same year without the need to obtain a Player Transfer and Clearance; *i.e.* he will be a dual registered player.
- b) A WAAFL registered player wishing to play WAFL League, Reserves or Colts shall obtain a Type 2 Local Interchange Permit in accordance with the WAFL.
- c) A WAFL registered player wishing to play in the WAAFL shall lodge a Type 2 Local Interchange Permit online via Footyweb no later than 12 noon Monday following the WAAFL match he played.
- d) A dual registered player is not permitted to play for a WAFL club and his WAAFL club on the same weekend. If this does occur; where the player plays his WAFL match before his WAAFL match, the player will be deemed an ineligible player in accordance with these by-laws in the match he played. Where the player plays his WAAFL match before his WAFL match, he will be deemed an eligible player but his WAAFL match will not count towards finals eligibility.
- e) Only six WAFL registered players who have yet to play a WAAFL match are permitted to play for a WAAFL club at any one time on a weekly basis.
- f) A WAAFL registered player is required to lodge a Player Transfer and Clearance only when selected to play his first WAFL League match.
- g) A dual registered player is eligible to play finals in both the WAAFL and WAFL competitions subject to satisfying finals eligibility of both competitions.
- h) A dual registered player suspended by the WAFL shall be ineligible to play in the WAAFL until such time as determined by the General Manager in his discretion.

A2.5.2 WAAFL and WACFL - Fly in/Fly out (FIFO) (Type 2 Local Interchange Permit)

- a) A WAAFL registered player working in a country location on a FIFO arrangement is permitted to play with a WACFL club in the district of his temporary residence without the need to obtain a Player Transfer and Clearance; *i.e.* he will be a dual registered player.
- b) A player wishing to play under this arrangement shall obtain a Type 2 Local Interchange Permit and provide information from his employer certifying he is employed on a FIFO arrangement which shall be submitted in accordance with the relevant WACFL competition rules.
- c) A dual registered player may only play for his WACFL club when residing in his temporary residence on his normal FIFO schedule.
- d) A dual registered player is not permitted to play for a WACFL club and his WAAFL club on the same weekend. If this does occur, the player will be an ineligible player in accordance with these by-laws.
- e) A dual registered player is eligible to play finals in both the WAAFL and WACFL competitions subject to satisfying finals eligibility of both competitions.

- f) A dual registered player wishing to transfer to another WACFL club may do so in accordance with the relevant WACFL competition rules.
- g) Should a player's FIFO employment arrangement cease, the dual registration automatically ceases. If the player wishes to continue playing for his WACFL club, he will be subject to Player Transfer and Clearance or a Type 2 Local Interchange Permit, whichever is applicable.
- h) A dual registered player suspended by his WACFL competition shall be ineligible to play in the WAAFL until such time as determined by the General Manager in his discretion.

A2.5.3 WAAFL and WAFC/DFDC – Juniors (Type 2 Local Interchange Permit)

- a) A player is permitted to play with a WAAFL club and a WAFC/DFDC junior club in the same year without the need to obtain a Player Transfer and Clearance; *i.e.* he will be a dual registered player.
- b) A WAAFL registered player wishing to play WAFC/DFDC junior football shall obtain a Type 2 Local Interchange Permit in accordance with WAFC/DFDC requirements.
- c) A WAFC/DFDC junior registered player wishing to play in the WAAFL shall lodge a Type 2 Local Interchange Permit online via Footyweb no later than 12 noon Monday following the WAAFL match he played.
- d) A dual registered player is permitted to play for his WAFC/DFDC junior club and his WAAFL club on the same weekend.
- e) A dual registered player is eligible to play finals in both the WAAFL and WAFC/DFDC competitions subject to satisfying finals eligibility of the both competitions.
- f) A dual registered player suspended by his WAFC/DFDC shall be ineligible to play in the WAAFL until such time as determined by the General Manager in his discretion.

A2.5.4 WAAFL and AFL Masters WA (Type 2 Local Interchange Permit)

- a) A player is permitted to play with a WAAFL club and an AFL Masters WA club in the same year without the need to obtain a Player Transfer and Clearance; *i.e.* he will be a dual registered player.
- b) A WAAFL registered player wishing to play AFL Masters WA shall obtain a Type 2 Local Interchange Permit in accordance with AFL Masters WA requirements.
- c) An AFL Masters WA club registered player wishing to play in the WAAFL shall lodge a Type 2 Local Interchange Permit online via Footyweb no later than 12 noon Monday following the WAAFL match he played.
- d) A dual registered player is permitted to play for his AFL Masters WA club and his WAAFL club on the same weekend.
- e) A dual registered player suspended by his AFL Masters WA club shall be ineligible to play in the WAAFL until such time as determined by the General Manager in his discretion.

A2.5.5 WAAFL and WAWFL (Type 2 Local Interchange Permit)

- a) A player is allowed to play with a WAAFL club and a WAWFL club in the same year without the need to obtain a Player Transfer and Clearance; *i.e.* she will be a dual registered player.
- b) A WAAFL registered player wishing to play WAWFL League, Reserves or Youth Girls shall obtain a Type 2 Local Interchange Permit in accordance with the WAWFL.
- c) A WAWFL registered player wishing to play in the WAAFL shall lodge a Type 2 Local Interchange Permit online via Footyweb no later than 12 noon Monday following the WAAFL match she played.

- d) A dual registered player is not permitted to play for a WAWFL club and her WAAFL club on the same weekend. If this does occur; where the player plays her WAWFL match before her WAAFL match, the player will be an ineligible player in accordance with these by-laws in the match she played. Where the player plays her WAAFL match before her WAWFL match, she will be deemed an eligible player but her WAAFL match will not count towards finals eligibility.
- e) Only six WAWFL registered players who have yet to play a WAAFL match are permitted to play for a WAAFL club at any one time on a weekly basis.
- f) A WAAFL registered player is required to lodge a Player Transfer and Clearance only when selected to play her first WAWFL League match.
- g) A dual registered player is eligible to play finals in both the WAAFL and WAWFL competitions subject to satisfying finals eligibility of both competitions.
- h) A dual registered player suspended by the WAWFL shall be ineligible to play in the WAAFL until such time as determined by the General Manager in his discretion.

A2.5.6 WAAFL Colts Teams – Surplus Players (Type 2 Local Interchange Permit)

- a) Subject to such conditions as the General Manager considers appropriate in his absolute discretion, a colts player is permitted to play in the colts competition with another WAAFL club once agreement between respective clubs is formalised.
- b) The destination WAAFL club shall obtain a Type 2 Local Interchange Permit online via Footyweb no later than 12 noon Monday following the WAAFL match he played.
- c) A colt's player is not permitted to play in more than one colts match on the same weekend or round of fixtures as deemed by the General Manager.
- d) A dual registered player is eligible to play finals with either club subject to satisfying finals eligibility of the WAAFL.
- e) A dual registered player suspended by the WAAFL shall be ineligible to play in the WAAFL until such time as determined by the General Manager in his discretion.

A2.5.7 Cessation of Type 2 Local Interchange Permit

- a) Each Type 2 Local Interchange Permit is valid for the current year and requires re-application for the next year.
- b) A Type 2 Local Interchange Permit may be cancelled by a player's club or if the General Manager decides accordingly.

BY-LAW A2.6 INELIGIBLE PLAYERS

- A2.6.1 An ineligible player is a person who:
- a) Is not registered with the WAAFL.
 - b) Has not gained the appropriate transfer and clearance in accordance with the transfer application process.
 - c) Is found guilty of a reportable offence and match suspension by the WAAFL, WAFC or another League/Association.
 - d) Is suspended from participating by the WAAFL.
 - e) Had his registration or Type 2 Local Interchange Permit cancelled.
 - f) Fails to comply with the Type 2 Local Interchange Permit requirements.
 - g) Is not listed on the team sheet for a match and plays.
 - h) Is listed on the team sheet and is not at the respective fixtured match, dressed in his playing uniform and ready to play, except in the circumstance as set out in By-law A2.9.
 - i) Does not meet the age criteria for the colts or F-Grade competitions.

- j) Fails to comply with the eligibility for finals of the WAAFL.
- k) Owes money to the WAAFL.
- l) Plays using a Type 1 Match Day Permit or Type 3 Temporary Transfer Permit.
- m) Plays a WAFL or WACFL or WAWFL match before a WAAFL match on the same weekend.

A2.6.2 A club which includes in its team an ineligible player:

- a) Shall automatically lose any match points gained by winning or drawing the match in which the player participated. Irrespective of scores in such match, the opposing team shall be declared the winner and shall be awarded the match and the offending team shall lose all points scored in the match.
- b) The premiership table shall be adjusted by:
 - i. Deducting the number of points scored by the team playing the ineligible player.
 - ii. Deducting 4 match points of the team playing the ineligible player if it won the match.
 - iii. The percentage accordingly.
- c) The team awarded the match:
 - i. Has the number of points scored by the other team deducted from their "against" points.
 - ii. Receives 4 match points where it may have lost the match.
 - iii. Has the percentage adjusted accordingly.
- d) The General Manager may impose a fine not exceeding that as prescribed in Schedule A1 or refer the matter to the Competition Integrity Officer or Disciplinary Committee.

BY-LAW A2.7 MATCHES

A2.7.1 The WAAFL shall determine the fixtures for qualifying and finals matches for the year.

A2.7.2 No team shall play in any match without the sanction of the WAAFL.

A2.7.3 From qualifying round matches, the WAAFL shall keep for each grade a premiership table showing matches won, matches lost, matches drawn, points scored for and against, and premiership points determined as follows:

- a) 4 points for winning a match.
- b) 2 points for a drawn match.
- c) 4 points for a match won on forfeit.

A2.7.4 Where a match is abandoned or terminated before the scheduled end or the result of the match is in dispute, the General Manager at his absolute discretion may determine the result or order the match be replayed at such time and place as he sees fit.

A2.7.5 Where a grade has fixtured byes that result in an uneven number of matches played, the General Manager shall determine final positions of the premiership table by dividing the number of matches won and drawn by the number of matches played to determine the ratio of matches won. Descending order will firstly be determined by the team with the highest ratio of matches won, teams with equal ratios shall then be determined in accordance with these by-laws.

BY-LAW A2.8 NIGHT MATCHES

A2.8.1 Night matches may be fixtured by the WAAFL.

A2.8.2 A club wishing to conduct a night match must comply with the Australian Standard for Sport Lighting for a Football Match.

A2.8.3 Light failure

- a) Where a light tower ceases to operate;
 - i. the field umpires must stop the match and direct the timekeepers to apply time on and record the time the match ceased.
 - ii. All umpires and players are permitted to leave the playing surface.
- b) The field umpires, a home team representative and the team captains shall meet. The home team representative will advise as to the ability to recommence play.
- c) If the match does not recommence within the thirty minutes from the recorded time the match ceased, the field umpires shall terminate the match.
- d) Where a match is unable to commence or is terminated before the scheduled end due to light failure, the General Manager at his absolute discretion may determine the result or order the match be replayed at such time and place as he sees fit.
- e) If the match is to recommence within the thirty-minute period;
 - i. the field umpires shall direct both teams to enter the playing surface whereby a ten minute warm up period is permitted.
 - ii. play will recommence from the time when the match ceased.
- f) Where the light continues to fail or is poor after the match has recommenced this procedure will be repeated.

BY-LAW A2.9 FORFEITS

A2.9.1 A team which forfeits a match shall be fined as prescribed in Schedule A1 and be credited with 90 points scored "against" and 1 point scored "for".

A2.9.2 The opposing team shall be awarded the win and shall receive 4 premiership points and be credited with 90 points scored "for" and 1 point scored "against".

A2.9.3 All match costs such as umpire fees shall be borne by the forfeiting team.

A2.9.4 An appointed field umpire who attends the ground where a match is forfeited shall be paid the full fee for such match provided he is not notified of such forfeit.

A2.9.5 Where a club has more than one team and forfeits through insufficient players, the team to forfeit must be the lowest graded team of that club. Failure to comply will result in the club's teams graded lower than the forfeiting team to lose all scores recorded for that fixture.

A2.9.6 A forfeited or abandoned qualifying match shall count as a qualifying match provided that upon the match being forfeited or abandoned the club shall have forwarded to the WAAFL no later than 12 noon Monday following the match the team sheets with the list of players who were selected in the match which includes the players seeking finals qualification. This rule only applies to the team receiving the benefit of the forfeit or abandonment.

A2.9.7 No club shall forfeit any match nor abstain from playing any match without first advising the WAAFL.

- A2.9.8 At any time during a season, if a club reasonably considers that it is unlikely to field a team for the remainder of the season it may notify the WAAFL that it withdraws that team from the competition. A team which has been withdrawn under this by-law is not permitted to re-enter the competition in the season.
- A2.9.9 Notwithstanding By-law A2.9.8, a team which forfeits three matches in a season may be withdrawn from the competition for the remainder of the season at the absolute discretion of the General Manager.

BY-LAW A2.10 DETERMINING FINALISTS (FINALS)

- A2.10.1 To determine the Grand Final teams, a final round of matches (finals) will be played.
- A2.10.2 At the end of the qualifying round of matches in each grade teams shall be ranked in descending order according to premiership points gained. The team with the greatest number of points being ranked first. Should two or more teams gain the same number of premiership points, the one which has the best percentage of points for, over points against, shall be ranked highest.
- A2.10.3 The finals in each grade:
- a) up to eight teams in the grade will be the highest ranked four teams with four matches to be played.
 - b) between nine and eleven teams in the grade will be the highest ranked five teams with six matches to be played.
 - c) above 12 teams will be subject to the General Manager's determination.
- A2.10.4 Finals of 4 teams shall be played as follows:
- i. First Semi Final: the third team shall play the fourth team.
 - ii. Second Semi Final: the first team shall play the second team.
 - iii. Preliminary Final: the winner of (i) shall play the loser of (ii)
 - iv. Grand Final: the winner of (ii) shall play the winner of (iii).
- A2.10.5 Finals of 5 teams shall be played as follows:
- i. Elimination Final: the fourth team shall play the fifth team.
 - ii. Qualifying Final: the second team shall play the third team.
 - iii. First Semi Final: the winner of (i) shall play the loser of (ii).
 - iv. Second Semi Final: the winner of (ii) shall play the first team.
 - v. Preliminary Final: the winner of (iii) shall play the loser of (iv)
 - vi. Grand Final: the winner of (v) shall play the winner of (iv).
- A2.10.6 The finals including venues, start time and change room allocation will be determined by the General Manager.
- A2.10.7 Finals fixtures**
Matches will be fixtured at the highest graded team's home ground or a ground suitable to the WAAFL regardless of the position of the opposing team in a lower grade.
- A2.10.8 Drawn matches in finals**
- a) There shall be no drawn match result in the finals. All matches will be decided by playing extra time of two periods of five minutes.
 - b) No time on will be played during extra time except where permitted in these by-laws.

- c) Where the score is tied at the conclusion of the fourth quarter the field umpires shall advise both captains that extra time will be played.
- d) If the scores are tied after the completion of the first two periods of extra time then a second two periods will be played. This will continue until a result is reached.
- e) The break between the siren to conclude the fourth quarter and the commencement of the first period of extra time shall be seven minutes.
- f) Coaches are permitted to address teams and enter the playing surface during this break.
- g) At the conclusion of the first period of extra time, teams shall immediately change ends. Coaches shall not be permitted to enter the playing surface at this time.

2.10.9 All other match and player requirements will be in accordance with these by-laws.

BY-LAW A2.11 PLAYING SURFACE

- A2.11.1 Unless stated elsewhere in these by-laws, the ground and goal post requirements are as stated in the Laws of Australian Football.
- A2.11.2 Clubs must complete the match day checklist as provided by the JLT Insurance APP before the commencement of the first match on the ground for that day.
- A2.11.3 Where the field umpires agree the ground is unfit for play, the field umpires shall come together whereby the match shall be terminated. The General Manager may cancel the match or order a match be replayed at such time and place as he sees fit.

BY-LAW A2.12 PRE-MATCH PROVISIONS

The team mentioned first in a match fixture shall be called the home team. The team mentioned second shall be called the away team.

A2.12.1 Football

The home team for each fixtured match shall supply a new WAAFL approved football for all league matches and/or a good condition football for reserves, lower grades and colts. The away team shall supply a good condition football ball as an emergency. Failure to do so will incur a fine as prescribed in Schedule A1.

A2.12.2 Timekeepers and siren/bell

The home team for each fixtured match shall have a suitable and audible siren/bell. Both teams shall provide a timekeeper who shall meet to commence and end the quarter. Failure to do so will incur a fine as prescribed in Schedule A1.

A2.12.3 Interchange stewards

Both teams shall provide an interchange steward to record yellow and red cards issued by the umpires, and where a stretcher has been used. Failure to do so will incur a fine as prescribed in Schedule A1.

A2.12.4 Scoreboard

The home team for each fixtured match shall have an operational scoreboard displaying the correct scores throughout the match. Failure to do so will incur a fine as prescribed in Schedule A1.

A2.12.5 Playing area and equipment

The home team for each fixtured match is responsible for having the playing surface correctly and visibly marked (including interchange, coaches box and spectator line) goal post pads and a stretcher available on the boundary. Both teams are required to use white goal flags. Failure to do so will incur a fine as prescribed in Schedule A1.

A2.12.6 Changing rooms

The home team for each fixtured match is responsible for providing the away team a changing room which is secure and clean, and providing the umpires a changing room which is separate to both teams which is secure and clean.

A2.12.7 Team sheets

- a) The team's senior coach shall be responsible for the accuracy of his team sheet to ensure those players listed on his team sheet are in accordance with By-law A2.12.7(b)(i).
- b) All players for each respective match (including those who may be arriving late) shall be listed on the club's team sheet for each match stating:
 - i. Each player's name, registration number and jumper number participating in the match.
 - ii. Each team's senior coach and runner names.
- c) Prior to the commencement of each match, teams shall lodge with the field umpires and with the opposition team a copy of their team sheet.
- d) Should a team sheet require amendment after lodgement, the relevant team official shall inform the field umpires and the opposition team of the change at the next scheduled break in the match.
- e) Team sheets are confirmed final once lodged on the Umpire's Match Report via the WAAFL APP or the field umpire signing it.
- f) At the conclusion of the match, the field umpires shall return respective team sheets to the teams. Teams are to retain and store their original team sheet till the end of the season.
- g) Each team has until 12 noon Monday following the match to electronically update his team sheet, including the assignment of jumper numbers to each player via Footyweb so as to replicate the team sheet confirmed by the Umpire's Match Report.
- h) Where there may be discrepancy between the original paper team sheet and the electronic team sheet, the original paper team sheet shall prevail.
- i) To be listed on a team sheet a player must be at his respective fixtured match, dressed in his playing uniform and ready to play except in the circumstance as set out in By-law A2.9 (Forfeits).
- j) A team sheet cannot be submitted for a fixtured bye.
- k) Failure to comply with this by-law will incur a fine as prescribed in Schedule A1 and the matter may be referred by the General Manager for further disciplinary action.

A2.12.8 Late arrival of players

- a) Prior to the commencement of play the team manager or coach is to inform the opposition team manager or coach the name, registration number and jumper number of each player who will be arriving late.
- b) The team manager or coach must inform the opposing team manager or coach of the arrival of the late player before he can play in the match.
- c) Any player who is not dressed in his playing uniform and ready to play before half-time shall not be permitted to play.

BY-LAW A2.13 PLAYING UNIFORM

This by-law only pertains to the playing uniform specification and does not confer on a club or a manufacturer authorisation to reproduce the WAAFL or its sponsors' logos without prior permission from the General Manager.

A2.13.1 Playing uniform

- a) The playing uniform shall comprise a club jumper, shorts and socks registered and approved by the General Manager together with football boots.
- b) Each player shall wear the playing uniform to play in the WAAFL.
- c) Players on the same team are not permitted to wear the same jumper number during a match.
- d) The away team is required to wear an alternative jumper for a match where team jumpers clash in design or colour.
- e) Where a player does not wear the correct playing uniform the club shall incur a fine as prescribed in Schedule A1.

A2.13.2 Playing jumper

- a) Each club shall have its jumper(s) registered by the WAAFL to play in a match.
- b) A club is permitted to have more than one registered jumper.
- c) A club wishing to alter the design or colours of its registered jumper(s) shall apply and gain permission from the General Manager prior to its use.
- d) The jumper shall comply with WAAFL specifications, branding, licensing and advertising specifications. Failure to do shall incur a fine as prescribed in Schedule A1.

A2.13.3 Playing shorts

- a) The home team shall wear black or coloured uniform shorts.
- b) The away team shall wear white shorts. A club wishing to wear coloured shorts as the away team shall seek permission from the General Manager prior to its use.
- c) Shorts shall comply with WAAFL specifications branding, licensing and advertising specifications. Failure to do shall incur a fine as prescribed in Schedule A1.

A2.13.4 Socks

- a) Each player shall wear football socks which are uniform in colour and design.
- b) Sport/ankle socks are not permitted to be worn.
- c) Socks shall comply with WAAFL specification, branding, licensing and advertising specifications. Failure to do shall incur a fine as prescribed in Schedule A1.

A2.13.5 Branding, licensing and advertising

- a) The playing uniform is not permitted to be branded or have a logo which conflicts with a WAAFL sponsor or carry slogans or designs which may be considered derogatory or inflammatory.
- b) Branding and logos are permitted in accordance with the respective competition's schedule.

A2.13.6 Protective gear

Before any protective gear may be worn in a match:

- a) Written approval signed by a medical practitioner must be lodged with the General Manager 48 hours before the first match in which the player is to participate wearing the protective gear.
- b) The General Manager must provide written permission to play with the protective gear.
- c) Umpires have the power to examine any protective gear, and if deemed necessary, require production of the General Manager's written permission.

A2.13.7 Jewellery

A player is not permitted to wear any form of jewellery during a match.

BY-LAW A2.14 COACHES

- A2.14.1 A team for any match shall have a coach who is subject to the same investigations and penalties as a player; including suspension, sanctions and fines. A team which does not have a coach shall forfeit the match.
- A2.14.2 All coaches shall hold as a minimum Level 1 AFL Coaching Accreditation (Senior) and be subject to the WAFC Coach Accreditation Policy.
- A2.14.3 It is a condition of the WAAFL's insurance that a minimum level 1 accredited coach is required to officiate for each team at each match.
- A2.14.4 A coach is required to attain his level 1 coaching accreditation before the first match he coaches.
- A2.14.5 Where a coach does not fulfil this obligation to become accredited before the first match he coaches, he shall not be permitted to coach or play or act in any official capacity on match day for the remainder of that year. Where a coach has been found to have breached this by-law, his team shall receive the same penalty as playing an ineligible player. A coach dismissed under the above circumstances cannot be reappointed to the position from which he was dismissed until he achieves accreditation.
- A2.14.6 A player is permitted to be a coach.
- A2.14.7 A coach who is a player in another team is permitted to leave the match, provided he is replaced by a minimum level 1 accredited coach. The replacement coach's name shall be noted on the team sheet.
- A2.14.8 A non-playing coach is not permitted on the playing surface whilst the match is in progress.
- A2.14.9 The team's senior or head coach is responsible for the selection of the players that play in a match. He is responsible for the accuracy of his team sheet to ensure those players listed on his team sheet are in accordance with By-law A2.12.7(b)(i).

A2.14.10 Coach demerit points

- a) All coaches are accountable in maintaining the Spirit of the Game through effective player management. Where a player commits an offence detrimental to football or a reportable offence, the senior coach of the offending player's team shall receive a demerit point in accordance with the following;
 - i. 1 point for every 3 yellow cards issued in a season.
 - ii. 2 points for each melee involving his team.
 - iii. 3 points for each reportable offence of which a player in his team is found guilty.
- b) Where a senior coach accumulates 10 demerit points or more within the current season he may be sanctioned, fined and/or suspended from coaching in the WAAFL.
- c) At his absolute discretion, the General Manager may apply additional conditions to coach in the WAAFL.

BY-LAW A2.15 UMPIRES**A2.15.1 Appointments**

- a) The competitions shall be umpired by WAAFL/WAFC Appointed Umpires (i.e. panel appointed) and/or Club Appointed Umpires.
- b) Unless specified by the WAAFL, each team is to appoint for each qualifying round match a field umpire, boundary umpire and goal umpire.
- c) All umpires shall be dressed in the approved WAAFL uniform. Failure to do so will incur a fine as prescribed in Schedule A1.
- d) All umpires are to list their names on the team sheet for each respective match they umpired. Failure to do so will incur a fine as prescribed in Schedule A1.
- e) Field umpires shall have attained the age of 16 years and meet any obligations set out in By-law A2.15.2.
- f) Boundary and goal umpires shall have attained the age of 13 years.
- g) All umpires must maintain a level of fitness commensurate with their role and attend training. All umpires are subject to their performance being assessed by WAAFL Officials. The General Manager may request an umpire to improve his fitness and/or performance and/or the General Manager may, in his absolute discretion, suspend an umpire from umpiring in the WAAFL.

A2.15.2 Field Umpire Accreditation

- a) All field umpires shall hold as a minimum Level 1 AFL Umpiring Accreditation.
- b) Notwithstanding the above, where a field umpire is appointed to umpire a match and does not hold a current umpiring accreditation, he is required to complete the online theory component of the AFL Level 1 Umpire Accreditation Course prior to umpiring his first WAAFL match for the season.
- c) Where an unaccredited umpire does not fulfil his obligation, the General Manager in his absolute discretion may sanction, fine and/or suspend the umpire from further umpiring in the WAAFL and/or sanction, fine or award a forfeit result against the respective club.

A2.15.3 Remuneration (match payments)

- a) WAAFL Appointed Umpires shall be remunerated by the home team in accordance with the WAAFL's agreement.
- b) Club Appointed Umpires shall be remunerated by the respective teams.

- c) A team is permitted to withhold match payments from umpires until it is satisfied all match day administration is completed by the umpire.

A2.15.4 Club Appointed Umpires

- a) Clubs appointing field umpires are to provide to the WAAFL the name, contact details and accreditation/experience of the umpire prior to his first match for the season. Failure to do so will incur a fine as prescribed in Schedule A1.
- b) Where a team's field, boundary and/or goal umpire is not provided for a match, the respective team shall forfeit the match except where both teams agree for the match to proceed. Where both teams mutually agree to play the match, the final result of the match will stand.
- c) Club Appointed Umpires are permitted to umpire in a two field umpire system, with the exception that in some matches the General Manager in his absolute discretion may appoint a third field umpire in the match.
- d) A suspended player is not permitted to act as a field, boundary or goal umpire.
- e) No field, boundary or goal umpire shall advise or coach a team by word or signal.

BY-LAW A2.16 SUPPORT PERSONNEL

A2.16.1 Runners

- a) All runners shall have attained the age of 16 years.
- b) A suspended player or suspended club official is not permitted to act as a runner.
- c) All runners are subject to the same investigations and penalties as a player; including suspension, sanctions and fines.
- d) All runners shall be dressed in the approved WAAFL uniform; the prescribed coloured shirt with the word "RUNNER" clearly marked on the back, black shorts or black track pants and enclosed footwear. Failure to do so will incur a fine as prescribed in Schedule A1.
- e) A team is permitted to use a maximum of two runners per match, with only one runner from each team allowed to be on the playing surface at any one time.
- f) Where a team uses two runners in a match, the runners must enter and leave the playing surface through the designated interchange area.
- g) Where a team uses one runner in a match, the runner is permitted to enter and leave the playing surface from any point of the playing surface.
- h) A runner's role is solely to deliver messages from the coaches to his players on the playing surface.
- i) A runner must immediately leave the playing surface once the message has been delivered.
- j) A runner is not permitted to:
 - i. interfere with the course of play, including standing and filling a space at set plays;
 - ii. coach or remain on the field barracking;
 - iii. engage physically or verbally with an opposition player, coach, official or umpire;
 - iv. use foul or abusive language.
- k) Where two runners from the same team are on the playing surface at the same time or if a runner fails to immediately respond to any request by a field umpire or breaches the above requirements, then the field umpire may award a free kick against the runner's team at the spot of the infringement or where the ball is at that time (whichever is the greater penalty) and/or report the runner.

A2.16.2 Water carriers

- a) All water carriers shall have attained the age of 13 years.
- b) A suspended player or suspended club official is not permitted to act as a water carrier.
- c) All water carriers are subject to the same investigations and penalties as a player; including suspension, sanctions and fines.
- d) All water carriers shall be dressed in the approved WAAFL uniform; the prescribed coloured shirt with the word "WATER" clearly marked on the back, shorts or track pants and enclosed footwear. Failure to do so will incur a fine as prescribed in Schedule A1.
- e) A team is permitted to use a maximum of four water carriers per match, unless permitted in these by-laws.
- f) A water carrier's role is solely to provide water/hydration to players when required.
- g) A water carrier is permitted on the playing surface but must immediately leave once he has completed his role.
- h) A water carrier is not permitted to:
 - i. deliver messages from the coaches to his players on the playing surface;
 - ii. interfere with the course of play, including standing and filling a space at set plays;
 - iii. coach or remain on the field barracking;
 - iv. engage physically or verbally with an opposition player, coach, official or umpire;
 - v. use foul or abusive language.
- i) If a water carrier fails to immediately respond to any request by a field umpire or breaches the above requirements, then the field umpire may award a free kick against the water carrier's team at the spot of the infringement or where the ball is at that time (whichever is the greater penalty) and/or report the water carrier.

A2.16.3 Trainers

- a) Each team shall have a trainer for each match who shall have attained the age of 16 years and be a minimum accredited Level 1 Sports Trainer. Failure to do so will incur a fine as prescribed in Schedule A1.
- b) A suspended player or suspended club official is not permitted to act as a trainer.
- c) All trainers are subject to the same investigations and penalties as a player; including suspension, sanctions and fines.
- d) All trainers shall be dressed in the approved WAAFL uniform; the prescribed coloured shirt with the word "TRAINER" clearly marked on the back, shorts or track pants and enclosed footwear. Failure to do so will incur a fine as prescribed in Schedule A1.
- e) A trainer's role is solely to provide medical assistance to players when required.
- f) A trainer is permitted on the playing surface but must immediately leave once he has completed his role.
- g) A trainer is not permitted to:
 - i. deliver messages from the coaches to his players on the playing surface;
 - ii. interfere with the course of play, including standing and filling a space at set plays;
 - iii. coach or remain on the field barracking;
 - iv. engage physically or verbally with an opposition player, coach, official or umpire;

- v. use foul or abusive language.
- h) If a trainer fails to immediately respond to any request by a field umpire or breaches the above requirements, then the field umpire may award a free kick against the trainer's team at the spot of the infringement or where the ball is at that time (whichever is the greater penalty) and/or report the trainer.
- i) A team's trainer is required to report to the WAAFL, as prescribed by the WAAFL from time to time, the conduct of any concussion test undertaken during training or a match. Failure to do so will incur a fine as prescribed in Schedule A1.

BY-LAW A2.17 DUTIES DURING AND POST MATCH PROVISIONS

A2.17.1 Scores

- a) Scores for each match shall be recorded by each goal umpire.
- b) At each match break, the goal umpires shall confer and check scores.
- c) Final scores shall be recorded on the team sheets and entered via the WAAFL APP by a field umpire.
- d) Each team is to retain one goal card from the match in case of a disputed final score.
- e) Where a discrepancy in the final score occurs and cannot be resolved at the conclusion of the match by the umpires, the matter will be referred to the General Manager for determination.
- f) For qualifying and final round matches, the designated home team shall be responsible for ensuring umpires submit the correct scores via the WAAFL APP within one hour of the conclusion of the match. Failure to do so will incur a fine as prescribed in Schedule A1.

A2.17.2 Umpire approach and escort

- a) A runner from both teams shall escort the umpires from the playing surface to the change rooms at half time and at the conclusion of the match. Failure to do so will incur a fine as prescribed in Schedule A1.
- b) The runner's role is to ensure umpire safety and welfare, and they shall not engage physically or verbally with an umpire.
- c) Only team captains are permitted to approach the umpires during the quarter time and three-quarter time breaks.
- d) An umpire is not permitted to be approached:
 - i. by a team captain at half-time;
 - ii. by a coach, club official or support personnel at any time.
- e) Players are permitted to talk to umpires during the match but at suitable times convenient to both player and umpire.

A2.17.3 Post match day administration

- a) A WAAFL appointed field umpire or the home team club appointed field umpire shall complete online via the WAAFL APP, final scores, cast WAAFL fairest and best votes for the match, photograph team sheets, and finalise any reports and fines before leaving the ground in accordance with the WAAFL's requirements.
- b) It is the responsibility of the home team to provide the umpire an iPad or other device to complete the post match day administration.
- c) A team official shall meet with the umpires at the conclusion of the match to confirm match day administration and receive any reports or confirm prescribed penalty offers from the umpires.
- d) At the conclusion of the match the umpires shall return respective team sheets to teams. Teams are to retain and store the original team sheet till the end of the season.

- e) Each team is to retain one goal card from the match in case of a disputed final score.
- f) A club is permitted to withhold match payments from umpires till it is satisfied all match day administration is completed.

BY-LAW A2.18 COUNTING OF PLAYERS (HEAD COUNT)

- A2.18.1 Only the captain of a team at any time during a match may request the field umpire count the number of players of the opposing team who are on the playing surface.
- A2.18.2 Where a request is made, the field umpire shall:
- a) Stop play at the first available opportunity and direct the timekeepers to apply time on.
 - b) Call into line within the centre square the players of both teams who are at the time on the playing surface and count the number of players.
 - c) Upon completing the count, ensure each team has the permitted number of players on the playing surface and then recommence play at the position on the playing surface where the field umpire stopped play.
 - d) As soon as practicable after the match, report via the WAAFL APP a request had been made to count the number of players in a team and the number of players actually counted.
- A2.18.3 Where a team has more than the permitted number of players on the playing surface, the following shall apply:
- a) The field umpire shall award a free kick to the captain of the requesting team, which shall be taken at the centre circle or where play was stopped, whichever is the greater penalty against the offending team.
 - b) A fifty-metre penalty shall then be imposed from the position where the free kick was awarded.
 - c) The offending team shall lose all points which it has scored in the match up to the time of the count. The scoreboard shall be adjusted to show this fact.
 - d) The offending team will incur a fine as prescribed in Schedule A1.
- A2.18.4 Where a count reveals a team has the permitted number of players on the playing surface, the following shall apply:
- a) A field umpire shall award a free kick to the captain of that team, which shall be taken at the centre circle or where play was stopped, whichever is the greater penalty against the requesting team.
 - b) A fifty-metre penalty shall then be imposed from the position where the free kick was awarded.
 - c) If a field umpire is of the opinion a request was made primarily to delay play or such request did not have sufficient merit, the field umpire shall issue a red card to the captain who requested the count for time wasting.

BY-LAW A2.19 TIMEKEEPERS

- A2.19.1 The home team for each match shall have a suitable and audible siren/bell. Both teams shall provide a timekeeper, who shall meet to commence and end the quarter. Failure to do so will incur a fine as prescribed in Schedule A1.
- A2.19.2 Where timekeepers disagree to the length or variation of the time of any quarter such dispute shall be reported to the field umpire at the next match break.

A2.19.3 The field umpires shall note such disagreement in their report to the WAAFL, and in the event of a protest on the result of the match on the grounds of an error in timekeeping, a copy of the report will be made available to the General Manager for determination.

A2.19.4 The total points scored by both teams shall stand and count in the percentages.

BY-LAW A2.20 BLEEDING

A2.20.1 Where a player is bleeding actively or has blood on his playing uniform or himself:

- a) He shall on his own accord or on direction of the field umpire leave the playing surface immediately.
- b) The field umpire will stop play at the next possible break in play and allow the replacement of players.

A2.20.2 A player directed by the field umpire to leave the playing surface can seek medical attention at any point off the playing surface (ie; is not required to leave through the interchange area). The replacement player shall enter through the interchange area. The injured player shall enter through the interchange area when resuming play.

A2.20.3 A player who refuses the direction of a field umpire may be issued with a yellow card.

A2.20.4 A player who deliberately smears blood on another person shall be reported by the umpires.

BY-LAW A2.21 CONCUSSION

A2.21.1 A player suspected of having suffered a head injury/concussion or is knocked unconscious shall:

- a) Be assessed by the team's trainer using the Pocket Concussion Recognition Tool (CRT), preferably within 10 minutes of the incident.
- b) Use of the Pocket (CRT) requires NO medical training.
- c) Have the matter recorded at the conclusion of the match via the WAAFL APP by the respective team's trainer. Failure to do so will incur a fine as prescribed in Schedule A1.

A2.21.2 Any player who FAILS the Pocket CRT assessment is not permitted to return to the playing surface.

A2.21.3 A player whose name is submitted to the WAAFL as having FAILED the Pocket CRT is NOT permitted to play in the WAAFL until his club receives a Medical Certification clearing him to play.

A2.21.4 A player who suffers a concussion should on the day of the match:

- a) Keep well hydrated and NOT consume alcohol.
- b) NOT drive a motor vehicle.
- c) NOT be left alone and be woken every 2-3 hours during the night to ensure they are well.
- d) Seek IMMEDIATE medical attention if they:
 - Are unconscious for more than 5 minutes
 - Develop visual disturbance
 - Are confused
 - Develop nausea/vomiting
 - Have a headache not responding to Paracetamol or Ibuprofen.

BY-LAW A2.22 EXTREME HEAT

- A2.22.1 Where weather forecasts are for extreme heat, the General Manager may direct clubs to;
- a) re-schedule start times to avoid hot conditions.
 - b) extend interchange bench by two players.
 - c) increase the number of water carriers to provide adequate drinks to players and umpires as required.
 - d) increase the length of scheduled breaks to enable teams to leave the field for shade: quarter time and three quarter - 10 minutes, half time - 25 minutes.
 - e) provide extra field and boundary umpires.
 - f) postpone, cancel or terminate matches.
- A2.22.2 Where a match is postponed, cancelled or terminated, the General Manager at his absolute discretion may determine the result or order the match be replayed at such time and place as he sees fit.

BY-LAW A2.23 LIGHTNING

- A2.23.1 Suspension and resumption of play should follow the "30/30" rule: play should stop when the flash-to-bang count approaches 30 seconds, and should not resume until 30 minutes after the last sight of lightning or sound of thunder.
- A2.23.2 Where the flash-to-bang count approaches 30 seconds to the match;
- b) the field umpires shall stop the match and direct the timekeepers to apply time on and record the time the match ceased.
 - c) All umpires, players and officials shall leave the playing surface.
- A2.23.3 The field umpires will determine when to recommence play in accordance with By-law A2.23.1.
- A2.23.4 If the match does not recommence within the sixty minutes from the recorded time the match ceased, the field umpires shall terminate the match.
- A2.23.5 Where a match is terminated before the scheduled end, the General Manager at his absolute discretion may determine the result or order the match be replayed at such time and place as he sees fit.
- A2.23.6 If the match is to recommence within the sixty minute period;
- a) the field umpires shall direct both teams to enter the playing surface whereby a ten minute warm up period is permitted.
 - b) play will recommence from the time when the match ceased.
- A2.23.7 Where lightning continues after the match has re-commenced, this procedure will be repeated.

BY-LAW A2.24 VILIFICATION

The WAAFL acknowledges the diversity of clubs, players and officials, and accepts it has a responsibility to promote positive and constructive relations between all groups.

A2.24.1 Definition

Conduct that incites hatred towards, contempt for, ridicule of or discrimination against a person on the grounds of, including but not limited to, their race,

religion, colour, gender, sexual orientation, preference or identity, or special ability/disability (mental health, injury, illness).

A2.24.2 Resolution

The clubs and individuals concerned will take immediate action to resolve the matter. This process MUST be in private and no public statement is permitted by the clubs, players or any club official involved.

A2.24.3 Complaints

An umpire may report a player, club official or a club, or the matter may be investigated by the WAAFL.

A2.24.4 Conciliation

If this is the first complaint of this nature against this person or club, the matter is referred to conciliation and is to be resolved within five working days of the report date. The accused and witness meet with club officials and the General Manager (or his representative) or a mutually agreed third party. The complaint is heard in private.

A2.24.5 Disciplinary Committee

Where conciliation fails or is a person's or club's second offence the WAAFL will direct the case to a Disciplinary Committee.

A2.24.6 Penalties

Any player or club official who is found to have vilified another person and/or where a club has failed to act in a meaningful way to prevent or reduce vilification the club, player or club official may receive a penalty which may include suspension, sanctions and fines.

BY-LAW A2.25 MEDIA COMMENT AND USE OF SOCIAL MEDIA

A2.25.1 Any player or official who makes public comment to the media (including to the media or by the means contemplated in By-law A2.25.2) which the Board in its absolute discretion considers is contrary to the interest of the WAAFL **(Inappropriate Public Comment)** may receive such penalty as the Board in its absolute discretion sees fit which may include suspension, sanctions and fines provided under these by-laws for any other conduct.

A2.25.2 Any player or official who is found to have engaged in, or is suspected of engaging in the unacceptable use of Facebook, Twitter, YouTube or any other social networking site, including blogs, in connection with the WAAFL in any way, may be dealt with by the WAAFL as it deems fit, notwithstanding the behaviour did not occur on the playing field.

A2.25.3 Without limiting the operation of this by-law, Inappropriate Public Comment or unacceptable use may involve the player or official:

- a) Criticising umpires, players, officials, Tribunals or any other person involved in the WAAFL;
- b) Engaging in bullying behaviour including but not limited to name-calling or making condescending, offensive (including racist or sexist) or abusive remarks about any person; or
- c) Engaging in any other behaviour which the Board determines in its absolute discretion to have breached this by-law.

A2.25.4 It is not relevant that the player or official making the remarks was not aware that the content could or would be made publicly available.

BY-LAW A2.26 CRISIS MANAGEMENT

A crisis is a traumatic event, or the threat of an event which may cause death, extreme stress, fear or serious injury to the person experiencing or witnessing the event. Where a traumatic may or has occurred, a club official shall act in accordance with the WAAFL's Crisis Management Policy, which includes contacting the WAAFL General Manager or Football Operations Manager immediately.

BY-LAW A2.27 ORDER OFF RULE

A field umpire is permitted to order a player or Club Official from the playing surface by issuing a yellow or red card where the player or Club Official commits an offence detrimental to football or a reportable offence.

A2.27.1 Yellow card - Order off/cool off

- a) For behaviour, detrimental to football; where a field umpire deems a player or club official has committed a minor offence as listed:
 - i. Disputing a decision of an umpire.
 - ii. Intentionally, recklessly or negligently:
 - engaging in time wasting.
 - throwing, slinging or pushing an opponent after that player has taken a mark, disposed of the football or after otherwise out of play.
 - engaging in rough conduct against an opponent which in the circumstances is unreasonable.
 - engaging in a melee, except where a player's sole intention is to remove his player from an incident.
 - iii. Attempting to kick an opponent.
 - iv. Attempting to strike an opponent.
 - v. Tripping an opponent whether by hand, arm, foot or leg.
 - vi. Bumping or making forceful contact to an opponent from front on when that player has his head down over the ball.
 - vii. Intentionally shaking a goal or behind post.
 - viii. Wrestling an opponent.
 - ix. Using abusive, insulting, threatening or obscene language.
 - x. Failing to leave the playing surface immediately when directed to do so by a field umpire.
 - xi. Any act of misconduct.
- b) A yellow card offence will require a field umpire to *Order off* the playing surface the offending player or club official for 15 minutes of playing time.
- c) The player or club official shall immediately leave the playing surface through the interchange area. Where the player or club official does not immediately leave the playing surface through the interchange area the player or club official will be issued a red card.
- d) REPLACEMENT IS PERMITTED STRAIGHT AWAY.
- e) Where a player or club official is issued with two yellow card offences in the same match, then he shall take no further part in the match.
- f) The field umpire shall record all offending players or club officials on the match report via the WAAFL APP.

A2.27.2 Red card - Order off/Stay off

- a) For committing any reportable offence; where a field umpire deems a player or club official has committed.
- b) A red card offence will require a field umpire to *Order off* the playing surface the offending player or club official for the remainder of the match.
- c) The player or club official shall immediately leave the playing surface through the interchange area.
- d) REPLACEMENT IS PERMITTED STRAIGHT AWAY.
- e) The offending player or club official shall take no further part in the match or any other match on the same weekend and/or round.
- f) A player or club official issued a red card shall be considered 'on report'. The field umpire in his absolute discretion may deem the order off for the remainder of the match as sufficient penalty, may offer a prescribed penalty or may refer the report to the General Manager.

A2.27.3 Accumulated yellow cards

- a) Where a player or club official has been issued three yellow cards during the year he shall be automatically suspended from playing for two playing dates.
- b) If the player or club official is issued another yellow card after serving this suspension, he shall be suspended for two playing dates for each additional yellow card received.

A2.27.4 Match terminated by field umpires

- a) Where a player or official refuses to leave the playing surface immediately when ordered off the playing surface for a red card offence, the field umpire shall advise the offending person's captain.
- b) Should the offending player or club official continue to refuse to leave the playing surface, both field umpires and team captains shall come together whereby the match may be terminated.
- c) Where the match is terminated before the scheduled end, the offending person's team shall forfeit the match.

BY-LAW A2.28 MELEE RULE

A melee is a group of eight or more players and/or club officials arguing, wrestling, fighting or jostling on or off the playing surface before, during or after the match.

A2.28.1 Where a melee occurs;

- a) All support personnel will immediately leave the playing surface.
- b) Field umpires will attempt to diffuse the situation without entering into the immediate area of conflict.
- c) Players and club officials who do not comply with a field umpire's direction to disperse may be issued with a yellow card.
- d) The instigating players involved in the melee may be issued with a yellow or red card.
- e) A player who moves from any part of the playing surface to join the melee may be issued with a yellow card, except if that player is the captain who is assisting to diffuse the melee.
- f) Field umpires may report the teams for misconduct and each team will incur a fine as prescribed in Schedule A1.
- g) It is not the responsibility of umpires to individually notify those involved in the melee.
- h) Umpires observing specific incidents within the melee (ie; striking, kicking, etc.), shall report the offenders or may offer the prescribed penalty.

- A2.28.2 If an umpire's safety is at risk, the field umpires shall come together and agree to terminate the match. All umpires will group together and leave the ground.
- A2.28.3 Where a match is terminated before the scheduled end, the General Manager at his absolute discretion may determine the result or order the match be replayed at such time and place as he sees fit.

BY-LAW A2.29 REPORTING AND DISCIPLINING PLAYERS, CLUB OFFICIALS AND CLUBS

A2.29.1 Any player, club official or club who commits or engages in conduct which may constitute a Reportable Offence as per the Laws of Australian Football or breaches WAAFL rules, by-laws or policies may:

- a) Be reported by an umpire; or
- b) Have a Notice of Investigation lodged with the WAAFL.

A2.29.2 The General Manager in his absolute discretion may reopen any matter previously dealt with and determined, withdraw a prescribed penalty offer and acceptance, dismiss the matter, issue a caution, offer a pre-Tribunal penalty or refer the matter to a relevant body.

A2.29.3 Report by Umpires

- a) Only WAAFL appointed field, boundary and goal umpires, and club appointed field umpires are permitted to report any player, club official or club who commits or engages in conduct which may constitute a Reportable Offence as per the Laws of Australian Football or breaches WAAFL rules, by-laws or policies.
- b) The report must be received by the General Manager no later than 12 noon Monday following the match via the WAAFL APP.
- c) The umpire must inform the player or a team official of the report at the time of the incident. It is the responsibility of team officials to confirm with the field umpires at the conclusion of the match any reports.

A2.29.4 Prescribed Penalty offer by Field Umpires

- a) Where a red card has been issued and the player or club official is on report, the field umpire in his absolute discretion but within one hour of the conclusion of the match, may offer the player or club official a prescribed penalty of;
 - i. one or two yellow cards which shall be accumulated towards the player or club official's season record; or
 - ii. suspension from playing for one week or two weeks; or refer the report to the General Manager.
- b) Where a prescribed penalty was offered and accepted, the field umpire shall record the penalty via the WAAFL APP.
- c) Where a prescribed penalty was offered and not accepted by the player or club official, the report shall be referred to the General Manager.

A2.29.5 Pre-Tribunal Offer

- a) Any report referred to the General Manager shall be reviewed, and in his absolute discretion, the General Manager may offer the player or club official a penalty or refer the report to the Tribunal.
- b) Where a player or club official has not taken reasonable steps to respond to the General Manager's requirements, the General Manager in his absolute discretion may determine the matter.
- c) Where a pre-Tribunal penalty was offered and not accepted by the player or club official, the matter will be referred by the General Manager to the Tribunal.
- d) The club shall submit to the WAAFL a \$200 bond for the matter to be heard which will be refunded if the report is dismissed.

A2.29.6 WAFC Perth Community Football Tribunal (“Tribunal”)

- a) The Tribunal:
 - i. shall hear all reports referred to it by the General Manager.
 - ii. shall conduct hearings in accordance with its guidelines.
 - iii. may issue a caution or impose penalties as it sees fit and/or fines as permitted.
- b) Appeal of Tribunal decisions
 - i. Only the General Manager or the penalised player are permitted to appeal the penalties made by a Tribunal.
 - ii. The appeal shall be made in accordance with the Tribunal’s guidelines.

A2.29.7 Notice of Investigation

- a) Only WAAFL Officials, Umpiring Officials or Club Presidents on behalf of his club are permitted to lodge a Notice of Investigation on any player, club official or club who commits or engages in conduct which may constitute a Reportable Offence as per the Laws of Australian Football or breaches WAAFL rules, by-laws or policies.
- b) The Notice of Investigation shall be lodged on the Notice of Investigation Form (Schedule A2) which must be received by the General Manager in writing no later than 12 noon Monday following the incident or such further time as the General Manager in his absolute discretion may allow.
- c) A Notice of Investigation lodged by a club shall be accompanied by a \$200 bond which will be refunded if the matter is upheld.
- d) The General Manager shall review the Notice of Investigation and deal with the matter as permitted in By-law A2.29.2.

A2.29.8 Disciplinary Committee

- a) The General Manager shall appoint a Disciplinary Committee, including the Chairman, to hear matters referred to it which shall comprise either a Chairman sitting alone or a Chairman with up to two other persons.
- b) A Disciplinary Committee:
 - i. shall hear all matters referred to it by the Board, Competition Integrity Officer or General Manager.
 - ii. shall hear all witnesses to the matter as the committee in its absolute discretion deems to be relevant and give such weight to the evidence it hears as it determines in its absolute discretion.
 - iii. may inform itself of any matter it sees fit.
 - iv. may reopen any matter previously dealt with and determine accordingly.
 - v. may issue a caution or impose penalties as it sees fit and/or fines as permitted.
 - vi. Any decision of a Disciplinary Committee may be subject to appeal in accordance with these by-laws.
- c) Appeal of Disciplinary Committee decisions
 - i. A player, club official or club is permitted to appeal a decision made against them by a Disciplinary Committee.
 - ii. The appeal shall be;
 - in writing from the respective Club President to the General Manager.
 - lodged within 24 hours of the decision of the Disciplinary Committee.
 - accompanied by a \$500 bond which will be refunded if the

appeal is upheld.

- iii. The appeal will be referred to the WAAFL Appellate Body in accordance with these by-laws.

A2.29.9 Competition Integrity Officer

- a) The Board may from time to time appoint, remove or replace a Competition Integrity Officer.
- b) The Competition Integrity Officer may at any time investigate (formally or informally) any matter that may undermine the integrity of the competition including but not limited to amateur status, drugs in sport, ineligible players, vilification, player, coach and spectator behaviour, and the Spirit of the Game.
- c) The Competition Integrity Officer shall have the authority to;
 - i. conduct investigations in such a manner as he thinks fit.
 - ii. hear and determine matters of alleged breaches of the Laws of Australian Football or alleged breaches of WAAFL rules, by-laws and policies.
 - iii. hear all witnesses to the matter as he in his absolute discretion deems to be relevant and give such weight to the evidence he hears as he determines in his absolute discretion.
 - iv. inform himself of any matter he sees fit.
 - v. reopen any matter previously dealt with and determine accordingly.
 - vi. issue a caution or impose penalties as he sees fit and/or fines.
 - vii. refer any matter to a Tribunal or Disciplinary Committee.
 - viii. compel any player or club official for interview.
- d) Any player or club official who does not take reasonable steps to make himself available for interview, may be deemed by the Competition Integrity Officer to have acted in a manner prejudicial to the good order and management of the WAAFL, and be subject to a fine and/or suspended fine (bond) and/or suspended from participating by the Competition Integrity Officer, in his absolute discretion.
- e) Any decision of the Competition Integrity Officer may be subject to appeal in accordance with these by-laws.
- f) Appeal of Competition Integrity Officer decisions
 - i. A player, club official or club is permitted to appeal a decision made against them by the Competition Integrity Officer.
 - ii. The appeal shall be;
 - in writing from the respective Club President to the General Manager.
 - lodged within 24 hours of the decision of the Competition Integrity Officer.
 - accompanied by a \$500 bond which will be refunded if the appeal is upheld.
 - iii. The appeal will be referred to the WAAFL Appellate Body in accordance with these by-laws.

A2.29.10 WAAFL Appellate Body

- a) The General Manager shall appoint a WAAFL Appellate Body, including the Chairman, comprising either a Chairman sitting alone or a Chairman with up to two other persons, all who were not involved in the initial hearing.
- b) The Appellate Body;
 - i. shall hear all appeals resulting from decisions of a Disciplinary Committee or a Competition Integrity Officer.

- ii. shall hear all witnesses to the matter as the Appellate Body in its absolute discretion deems to be relevant and give such weight to the evidence it hears as it determines in its absolute discretion.
 - iii. may inform itself of any matter it sees fit.
 - iv. may issue a caution or impose penalties as it sees fit and/or fines as permitted.
- c) The WAAFL Appellate Body's decision shall be final and no further appeal will be allowed.

A2.29.11 Offences and Penalties

- a) A player found guilty of a Reportable Offence;
 - i. is ineligible to win a "Fairest and Best" award for that season;
 - ii. is ineligible to play in any representative team while under suspension.
 - iii. shall serve his suspension in the grade from which the report was made irrespective of any other team the club may have.
- b) With the exception of the Melee Rule (A2.28), where a player whilst playing in the WAAFL has:
 - accumulated a combined total of 12 weeks suspension; or
 - been found guilty of a reportable offence on three separate occasions in any one year; or
 - receives a suspension of five weeks or more for any one incident resulting in a reportable offence;shall have his registration cancelled.
- c) Any player or club official who acts or conducts himself in a manner prejudicial to the good order and management of amateur football or detrimental to the integrity of the WAAFL competition or brings the game into disrepute or breaches the Spirit of the Game shall be liable to a fine and/or suspended fine (bond) not exceeding \$500 and/or suspended from participating.
- d) A club or team which acts or conducts itself in a manner prejudicial to the good order and management of amateur football or detrimental to the integrity of the WAAFL competition or brings the game into disrepute breaches the Spirit of the Game, shall be liable to a fine and/or suspended fine not exceeding \$1000, and may be subject to further sanctions, including but not limited to, loss of Premiership Points and/or suspended from participating.
- e) Where no specific penalty is prescribed in respect of any offence under the Laws of Australian Football, by-laws or policies, a fine not exceeding \$1000 and/or other penalty may be imposed.
- f) The Board may declare any acts or omissions by players, club officials or clubs to be offences under these by-laws and declare the penalty for such offences.

SCHEDULE A1: FINES

PRE-MATCH	REF.	FINE
False declaration made on registration/clearance form.	A2.2.6	\$300
Failure to list player on team sheet. (per player)	A2.12.7(b)(i)	\$25
Failure to list Coach and Runner details on team sheet. (per official)	A2.12.7(b)(ii)	\$25
Failure to list Umpire details on team sheet. (per official)	A2.15.1(d)	\$25
Failure to provide umpires with Footyweb generated team sheets prior to the commencement of the match.	A2.12.7(c)	\$50
Failure to provide a field umpire.	A2.15.1(b)	\$200
Failure to provide boundary and/or goal umpire. (per umpire)	A2.15.1(b)	\$50
Failure to supply WAAFL approved football.	A2.12.1	\$100
Failure to provide a timekeeper and audible siren/bell.	A2.12.2	\$50
Failure to provide an interchange steward.	A2.12.3	\$50
Failure to provide an operational and attended scoreboard.	A2.12.4	\$50
Failure to mark the playing surface correctly and visibly.	A2.12.5	\$50
Failure to provide a first aid stretcher on the boundary.	A2.12.5	\$100
Failure to provide goal post padding.	A2.12.5	\$50
DURING AND POST MATCH	REF.	FINE
Failure to use white goal flags.	A2.12.5	\$25
Failure to provide an accredited Trainer.	A2.16.3(a)	\$250
Ineligible player. (per player) (not exceeding)	A2.6	\$1,000
Incorrect playing uniform. (per player)	A2.13	\$25
Incorrect umpire uniform. (per umpire)	A2.15.1(c)	\$25
Incorrect runner uniform. (per runner)	A2.16.1(d)	\$25
Incorrect water carrier uniform. (per carrier)	A2.16.2(d)	\$25
Incorrect trainer uniform. (per trainer)	A2.16.3(d)	\$25
Late starting quarters.	B2.5.7, C2.5.7, D2.5.7	\$25
Failure by runner to escort umpires from the playing surface.	A2.17.2(a)	\$50
Failure by Club Trainer to report concussion test to WAAFL.	A2.21.1(c)	\$25
Additional players on playing surface. (Head count)	A2.18.3(d)	\$50
Failure to submit scores by the prescribed time.	A2.17.1(f)	\$100
Forfeited match.	A2.9.1	\$300
Melee	A2.28.1(f)	\$200
Failure to update team sheet, including the assignment of jumper numbers to each player on team sheet and Footyweb.	A2.12.7(g)	\$50
ADMINISTRATIVE	REF.	FINE
Late team nomination fee. (per team per day)	A2.1.1(c)	\$50
Late payment of affiliation fee instalment.	3.2	\$50
Failure to provide name and contact details office bearers by the due date.	3.6	\$100
Failure to attend meeting of member clubs.	3.7.1	\$100
Failure to provide a compulsory return by the due date.	3.7.2	\$100
Failure to provide name and contact details of the senior coach for each team by the due date.	1.2.9	\$100
Non-compliant jumper branding and advertising.	A2.13	\$250
Failure to provide list and contact details of club umpire. (per umpire)	A2.15.4(a)	\$50

SCHEDULE A2: NOTICE OF INVESTIGATION FORM

NOTICE OF INVESTIGATION

(WAAFL BY LAW A2.29.7)

MATCH: _____ V _____

GRADE: _____ DATE: _____

QUARTER INCIDENT OCCURRED: _____

ACCUSED PLAYER & CLUB: _____

OFFENCE: _____

VICTIM & CLUB: _____

CLUB HAS READ BY LAW A2.29 YES / NO

NOTICE HAS BEEN LODGED BY THE 12 NOON MONDAY DEADLINE YES / NO

BOND OF \$200 HAS BEEN FORWARDED TO THE LEAGUE YES / NO

NAME OF CLUB OFFICIAL: _____

POSITION HELD AT CLUB: _____

SIGNATURE: _____

DATED: _____

SECTION 2: COMPETITIONS

PART B: MENS COMPETITION

Part B must be read in conjunction with Part A By-laws.

BY-LAW B2.1 COMPETITION STRUCTURE

- B2.1.1 The controlling body of the competitions is the WAAFL.
- B2.1.2 The WAAFL will conduct a senior mens and colts competition.
- B2.1.3 The senior mens and colts competitions are restricted sex competitions. Only males are eligible to play in the senior mens and colts competitions.
- B2.1.4 The senior mens competition grades may include but are not limited to:
- a) A Grade Mens (League) and A Reserves Grade Mens
 - b) B Grade Mens (League) and B Reserves Grade Mens
 - c) C1 Grade Mens (League) and C1 Reserves Grade Mens
 - d) C2 Grade Mens (League) and C2 Reserves Grade Mens
 - e) C3 Grade Mens (League) and C3 Reserves Grade Mens
 - f) C4 Grade Mens (League) and C4 Reserves Grade Mens
 - g) D1 Grade Mens and D1 Reserves Grade Mens
 - h) D2 Grade Mens and D2 Reserves Grade Mens
 - i) E1 Grade Mens
 - j) E2 Grade Mens
 - k) E3 Grade Mens
 - l) F Grade Mens
- B2.1.5 A League team is the highest team of the club, except for single team clubs.
- B2.1.6 The colts competition grades may include but are not limited to:
- a) Phil Scott Colts (aligned with A Grade matches)
 - b) Drew Banfield Colts (aligned with B Grade matches)
 - c) Ian Dargie Colts (aligned with C1 Grade matches)
 - d) Laurie Keene Colts
 - e) Brett Jones Colts
 - f) West Coast Eagles Colts
- B2.1.7 A player shall have attained the minimum age of 16 to play in any senior or colts competition match.
- B2.1.8 F Grade Mens shall be a restricted age competition. A player shall have attained the minimum age of 28 to play in any F Grade Mens match.
- B2.1.9 The colts competition shall be a restricted age competition. Any person who attains the age of 21 years (in the calendar year then current) is ineligible to play in the Colts competition. At his absolute discretion, the General Manager may approve a player to play colts where the player attains the age of 21 years (in the calendar year then current).
- B2.1.10 At his absolute discretion, the General Manager shall determine the grades, the season commencement date and season fixtures for each competition, including the number of teams per grade, and team relegation and promotion.

BY-LAW B2.2 TEAM GRADING, RELEGATION AND PROMOTION

- B2.2.1 Team grading relegation and promotion will be determined as follows;
- a) The club League teams occupying the lowest two positions on the Premiership table at the conclusion of the qualifying rounds in each grade (other than the Premiership table of the lowest grade) shall be relegated to the grade below their current grade the following year.
 - b) The club League teams playing in the Grand Final in each grade (other than the highest grade) shall be promoted to the grade above their current grade the following year. However, either club playing in the Grand Final may request of the General Manager not to be promoted in the following year provided this option has not been exercised by the club in the previous year. In this event, the highest placed team scheduled for relegation will remain in the higher grade.
 - c) A club's reserve and colts teams will be graded according to their respective League team.
- B2.2.2 No team shall be promoted if it has a club team in the grade to which it would be promoted.
- B2.2.3 Should the club have a team in the grade to which it is to be relegated such other club team shall also be relegated to the next lowest grade.
- B2.2.4 The General Manager may relegate or promote a team for fixturing and grade composition.

BY-LAW B2.3 TEAMS**B2.3.1 Team composition**

- a) Except for F Grade Mens, a team must consist of between 14 and 18 players who may be on the playing surface at any one time (18-a-side).
- b) F Grade Mens must consist of between 14 and 16 players who may be on the playing surface at any one time (16-a-side).
- c) Each senior team is permitted a maximum 22 players to play in each match.
- d) Each colts team is permitted a maximum 25 players to play in each match.
- e) A player who plays three or more higher grade matches in the current season is no longer permitted to play F-Grade Mens for the remainder of the current season.

B2.3.2 C4 Reserves, F Grade and Colts 'even up rule'

- a) This rule shall only apply to C4 Reserves, F Grade and colts qualifying round matches.
- b) Where a C4 Reserves or colts team can only field between 14 and 17 players, then the opposing team must field the same number of players on the playing surface; *i.e.* even up rule. The remaining opposing players may act as reserves.
- c) Where a F Grade team can only field between 14 and 15 players, then the opposing team must field the same number of players on the playing surface; *i.e.* even up rule. The remaining opposing players may act as reserves.
- d) Both teams shall inform the field umpires when the rule is to be applied prior to the commencement of the match.
- e) If, after the start of the match, the team starting with fewer players loses a player for any reason, no further even up is required.

BY-LAW B2.4 SELECTION OF PLAYERS BETWEEN TEAMS WITHIN A CLUB

- B2.4.1 Where a club's higher grade team has a fixtured "BYE" or "FORFEIT" and three or more higher grade players are selected to play in a lower grade, no more than two of them are permitted to return to the higher grade after playing one match in the lower grade. The remaining players selected may be promoted after having played at least two matches in the lower grade.
- B2.4.2 Lower grade players are permitted to play in a higher grade match on the same weekend or round of fixtures as deemed by the General Manager.
- B2.4.3 Higher grade players are not permitted to play in a lower grade match on the same weekend or round of fixtures as deemed by the General Manager.
- B2.4.4 A colts player is not permitted to play in more than one colts match on the same weekend or round of fixtures as deemed by the General Manager.
- B2.4.5 Where a player has been found to have breached this by-law, his team shall receive the same penalty as playing an ineligible player.

BY-LAW B2.5 SCHEDULED START AND PLAYING TIMES

- B2.5.1 The WAAFL shall determine the scheduled start time for each match.
- B2.5.2 Playing times and breaks are:

Colts	Four quarters of 20 minutes with no time on, except as permitted at By-law B2.5.6. Quarter-time break 5 minutes, half time break 15 minutes, three quarter time break 7 minutes.
F Grade	Four quarters of 15 minutes with no time on, except as permitted at By-law B2.5.6. Quarter-time break 5 minutes, half time break 10 minutes, three quarter time break 5 minutes.
Reserves, D and E Grades	Four quarters of 20 minutes with no time on, except as permitted at By-law B2.5.6. Quarter-time break 5 minutes, half time break 15 minutes, three quarter time break 7 minutes.
League	Four quarters of 25 minutes with no time on, except as permitted at By-law B2.5.6. Quarter-time break 5 minutes, half time break 15 minutes, three quarter time break 7 minutes.
- B2.5.3 Teams are not permitted to leave the playing surface except at the half time break and full-time, or as permitted in these by-laws.
- B2.5.4 A team not ready to commence play within 5 minutes of the scheduled start time shall be fined as prescribed in Schedule A1, unless a suitable explanation for such delay is accepted by the General Manager.
- B2.5.5 A team not ready to commence play within 15 minutes of the scheduled start time shall automatically forfeit the match.
- B2.5.6 Time on**

The duration of a match will incur no time on, except where there is undue delay such as a seriously injured player requiring a stretcher on the playing surface, a melee, a head count, light failure, lightning, or lost or damaged ball. In these circumstances, the field umpires shall signal and/or direct both timekeepers to apply time on. Both timekeepers are to concur on stopping and re-starting time.

Where timekeepers dispute the time, the General Manager at his absolute discretion may determine the result or order the match be replayed at such time and place as he sees fit.

- B2.5.7 A club failing to comply with the scheduled and allocated break times shall be fined as prescribed in Schedule A1.

BY-LAW B2.6 FINALS ELIGIBILITY

B2.6.1 Eligibility for finals – senior mens competition

- a) To be eligible to play finals a player shall play five qualifying matches over five rounds of fixtures for his club in the current year.
- b) The grade a player is permitted to play finals is as follows:
 - i. A player is permitted to play in any higher grade final.
 - ii. A player is permitted to play in any grade final provided he has played five qualifying matches in the respective grade he intends to play.
 - iii. A player who plays in a finals match of a higher grade is permitted to play in a lower grade final (after the higher grade is eliminated) as long as the player has played five qualifying matches in that lower grade.
 - iv. A player who has played less than five qualifying matches in a grade is only permitted to play finals in the highest grade in which he has played.
 - v. Where a club has more than one team playing in a final on the same day a player from a higher grade may play for the lower grade provided it is the club's NEXT LOWEST GRADE TEAM, except those players stated in B2.6.1(b)(iv) and B2.6.2(b)(iii).
- c) Where a player is dual registered the above same rules shall apply.

B2.6.2 Eligibility for finals – colts competition

- a) To be eligible to play finals in colts a player shall play five qualifying matches over five rounds of fixtures for his club in the current year.
- b) The grade a colts player is permitted to play finals is as follows:
 - i. A colts player is permitted to play in any grade final provided he has played five qualifying matches in the respective grade he intends to play.
 - ii. A colts player is permitted to play in any higher grade colts final.
 - iii. A colts player who has played his five qualifying matches only in colts is permitted to play in the club's highest grade.
 - iv. A player who plays in a finals match of a higher grade is permitted to play in a lower grade final (after the higher grade is eliminated) as long as the player has played five qualifying matches in that lower grade.
 - v. A colts player who has played less than five qualifying matches in a grade is only permitted to play finals in the highest grade in which he has played.
 - vi. Where a club has more than one colts team playing a final on the same day the player from a higher colts grade may play for the lower colts grade provided it is the club's NEXT LOWEST COLTS GRADED TEAM, except those players stated in B2.6.2(b)(v).
- c) A colts player is permitted to only play in one colts grade Grand Final in a year.
- d) Where a colts player is dual registered the above same rules shall apply.

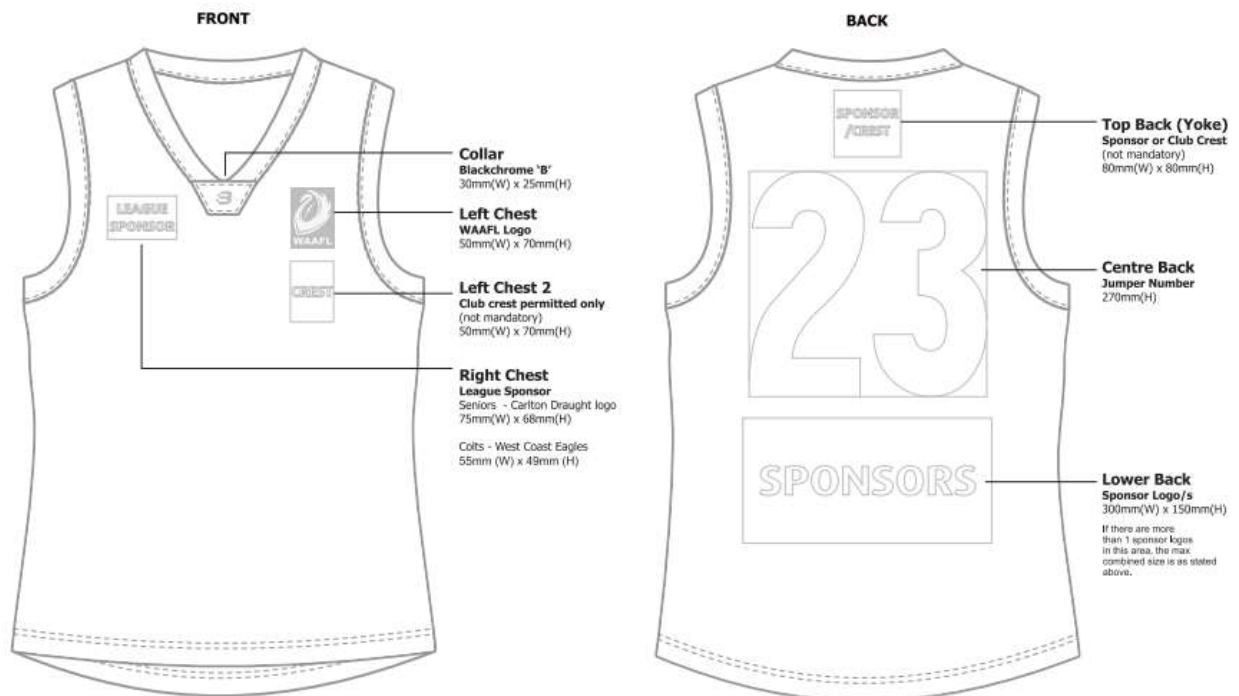
BY-LAW B2.7 MODIFIED MATCH CONDITIONS – F GRADE MENS

This by-law outlines match rules modified for F Grade Mens matches only. The Laws of Australian Football, AFL Regulations and policies, WAAFL Rules and By-laws shall prevail, unless expressed otherwise in By-law B2.7.

B2.7.1 F Grade out of bounds - last possession

- a) From a kick or handball, a free kick is awarded against the player who kicked or handballed the ball across the line without it being touched by an opposition player.
- b) If the ball goes out of bounds after no clear possession or is touched after a clear possession, the umpire will ball up 10 metres inside the boundary line.

SCHEDULE B1: MENS PLAYING UNIFORM – SPECIFICATIONS



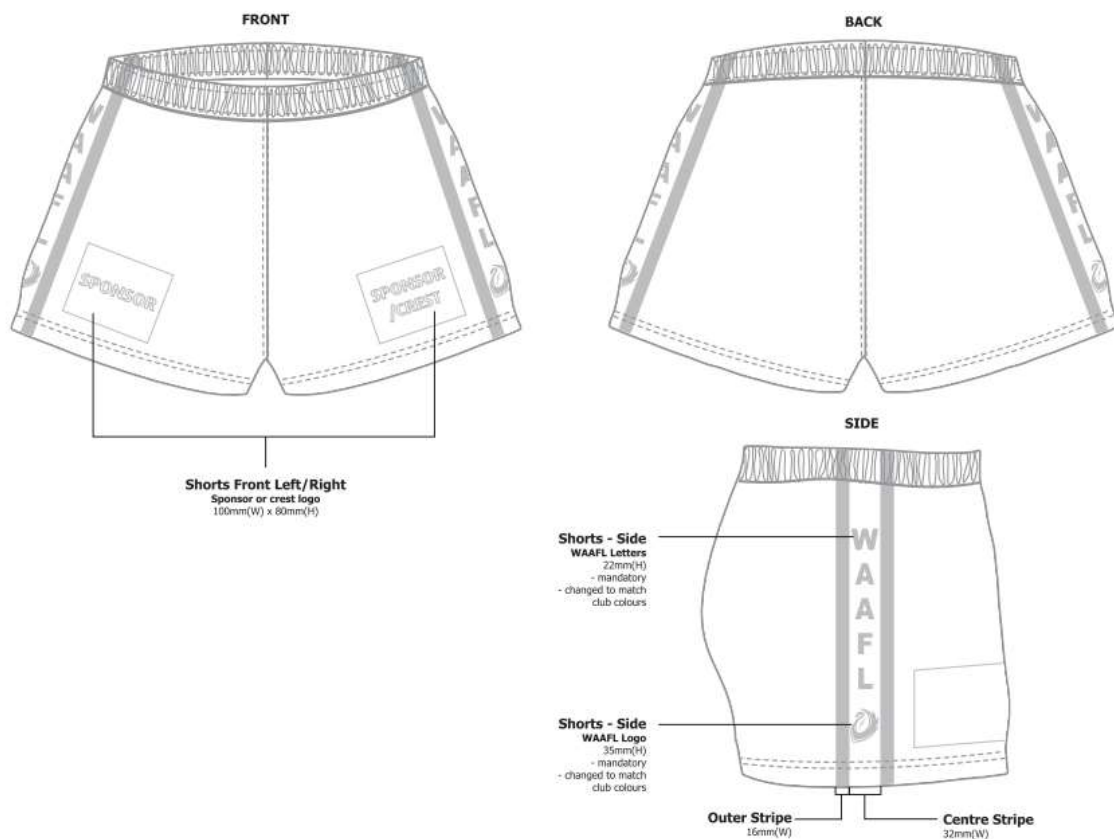
LEAGUE SPONSORS



SENIOR MENS TEAMS



COLTS TEAMS



SCHEDULE B2: MENS SUPPORT PERSONNEL UNIFORM – SPECIFICATIONS



SECTION 2: COMPETITIONS

PART C: WOMENS COMPETITION

Part C must be read in conjunction with Part A By-laws.

BY-LAW C2.1 COMPETITION STRUCTURE

- C2.1.1 The controlling body of the competitions is the WAAFL.
- C2.1.2 The WAAFL will conduct a senior womens competition.
- C2.1.3 The senior womens competition is a restricted sex competition. Only females are eligible to play in the senior womens competition.
- C2.1.4 The senior womens competition grades may include but are not limited to:
 - a) A Grade Women
 - b) B Grade Women
 - c) C1 Women (Development Grade)
 - d) C2 Women (Development Grade)
- C2.1.5 A club's first team is the highest team of the club.
- C2.1.6 A player shall have attained the minimum age of 17 to play in any senior womens competition match.
- C2.1.7 At his absolute discretion, the General Manager shall determine the grades, the season commencement date and season fixtures for each competition, including the number of teams per grade, and team relegation and promotion.

BY-LAW C2.2 TEAM GRADING, RELEGATION AND PROMOTION

- C2.2.1 Team grading relegation and promotion will be determined at the absolute discretion of the General Manager.
- C2.2.2 No team shall be promoted if it has a club team in the grade to which it would be promoted.
- C2.2.3 Should the club have a team in the grade to which it is to be relegated such other club team shall also be relegated to the next lowest grade.
- C2.2.4 The General Manager may relegate or promote a team for fixturing and grade composition.

BY-LAW C2.3 TEAMS

C2.3.1 Team composition

- a) A and B Grade Women teams are permitted a maximum 25 players to play in each match. Teams must consist of between 14 and 18 players who may be on the playing surface at any one time (18-a-side).
- b) Development Grade Women teams are permitted a maximum 18 players to play in each match. Teams must consist of between 9 and 15 players who may be on the playing surface at any one time (15-a-side).

C2.3.2 'Even up rule'

- a) This rule shall only apply to qualifying round matches.
- b) Where A and B Grade Women teams can only field between 14 and 17 players, then the opposing team must field the same number of players on the playing surface; *i.e.* even up rule. The remaining opposing players may act as reserves.
- c) Where Development Grade Women teams can only field between 9 and 14 players, then the opposing team must field the same number of players on the playing surface; *i.e.* even up rule. The remaining opposing players may act as reserves.
- d) Both teams shall inform the field umpires when the rule is to be applied prior to the commencement of the match.
- e) If, after the start of the match, the team starting with fewer players loses a player for any reason, no further even up is required.

BY-LAW C2.4 SELECTION OF PLAYERS BETWEEN TEAMS WITHIN A CLUB

- C2.4.1 Where a club's higher grade team has a fixtured "BYE" or "FORFEIT" and three or more higher grade players are selected to play in a lower grade, no more than two of them are permitted to return to the higher grade after playing one match in the lower grade. The remaining players selected may be promoted after having played at least two matches in the lower grade.
- C2.4.2 Lower grade players are permitted to play in a higher grade match on the same weekend or round of fixtures as deemed by the General Manager.
- C2.4.3 Higher grade players are not permitted to play in a lower grade match on the same weekend or round of fixtures as deemed by the General Manager.
- C2.4.4 Where a player has been found to have breached this by-law, her team shall receive the same penalty as playing an ineligible player.

BY-LAW C2.5 SCHEDULED START AND PLAYING TIMES

- C2.5.1 The WAAFL shall determine the scheduled start time for each match.
- C2.5.2 Playing times and breaks are:

Development Grades	Two halves of 20 minutes with no time on, except as permitted at By-law C2.5.6. Half time break 10 minutes.
A & B Grades	Four quarters of 15 minutes with no time on, except as permitted at By-law C2.5.6. Quarter-time break 5 minutes, half time break 10 minutes, three quarter time break 5 minutes.
- C2.5.3 Teams are not permitted to leave the playing surface except at the half time break and full-time, or as permitted in these by-laws.
- C2.5.4 A team not ready to commence play within 5 minutes of the scheduled start time shall be fined as prescribed in Schedule A1, unless a suitable explanation for such delay is accepted by the General Manager.
- C2.5.5 A team not ready to commence play within 15 minutes of the scheduled start time shall automatically forfeit the match.

C2.5.6 Time on

The duration of a match will incur no time on, except where there is undue delay such as a seriously injured player requiring a stretcher on the playing surface, a melee, a head count, light failure, lightning, or lost or damaged ball. In these circumstances, the field umpires shall signal and/or direct both timekeepers to apply time on. Both timekeepers are to concur on stopping and re-starting time.

Where timekeepers dispute the time, the General Manager at his absolute discretion may determine the result or order the match be replayed at such time and place as he sees fit.

- C2.5.7 A club failing to comply with the scheduled and allocated break times shall be fined as prescribed in Schedule A1.

BY-LAW C2.6 FINALS ELIGIBILITY

C2.6.1 Eligibility for finals – senior womens competition

- a) To be eligible to play finals a player shall play four qualifying matches over four rounds of fixtures for her club in the current year.
- b) The grade a player is permitted to play finals is as follows:
 - i. A player is permitted to play in any higher grade final.
 - ii. A player is permitted to play in any grade final provided she has played four qualifying matches in the respective grade she intends to play.
 - iii. A player who plays in a finals match of a higher grade is permitted to play in a lower grade final (after the higher grade is eliminated) as long as the player has played four qualifying matches in that lower grade.
 - iv. A player who has played less than four qualifying matches in a grade is only permitted to play finals in the highest grade in which she has played.
 - v. Where a club has more than one team playing in a final on the same day a player from a higher grade may play for the lower grade provided it is the club's NEXT LOWEST GRADE TEAM, except those players stated in C2.6.1(b)(iv).
- c) Where a player is dual registered the above same rules shall apply.

C2.6.2 Development grade grand finals

- a) Players in development grades shall be subject to finals eligibility in accordance with By-law C2.6.1.
- b) Notwithstanding By-law A2.10, only a grand final shall be played in development grades, which shall be determined as follows:
 - i. At the end of the qualifying round of matches in each development grade, teams shall be ranked in descending order according to premiership points gained, the team with the greatest number of points being ranked first. Should two or more teams gain the same number of premiership points, the one which has the best percentage of points for, over points against, shall be ranked highest.
 - ii. The two teams ranked first and second in each development grade at the end of the qualifying round of matches shall play in a grand final.

BY-LAW C2.7 MODIFIED MATCH CONDITIONS - DEVELOPMENT GRADES

This by-law outlines match rules modified for development grade matches only. The Laws of Australian Football, AFL Regulations and policies, WAAFL Rules and By-laws shall prevail, unless expressed otherwise in By-law C2.7.

C2.7.1 Playing surface

The playing surface should be approximately 130m to 155m in length.

C2.7.2 Modified wrap tackle

- a) A player is only permitted to wrap the arms around an opposition player whilst remaining on their feet. Players once tackled have three seconds to dispose of the ball or be awarded a free kick against them.
- b) A free kick shall be awarded against the tackler where;
 - i. a tackle is deemed by the field umpire as a sling or that deliberately brings the tackler and/or opposition player to the ground.
 - ii. the arms of an opposition player are grabbed.

C2.7.3 Out of bounds - last possession

- a) From a kick or handball, a free kick is awarded against the player who kicked or handballed the ball across the line without it being touched by an opposition player.
- b) If the ball goes out of bounds after no clear possession or is touched after a clear possession, the umpire will ball up 10 metres inside the boundary line.

C2.7.4 Bouncing the ball

A player is only permitted to bounce or touch the ball on the ground once after which she must dispose of the ball by kick or handball. Failure to do so shall see the opposing team awarded a free kick.

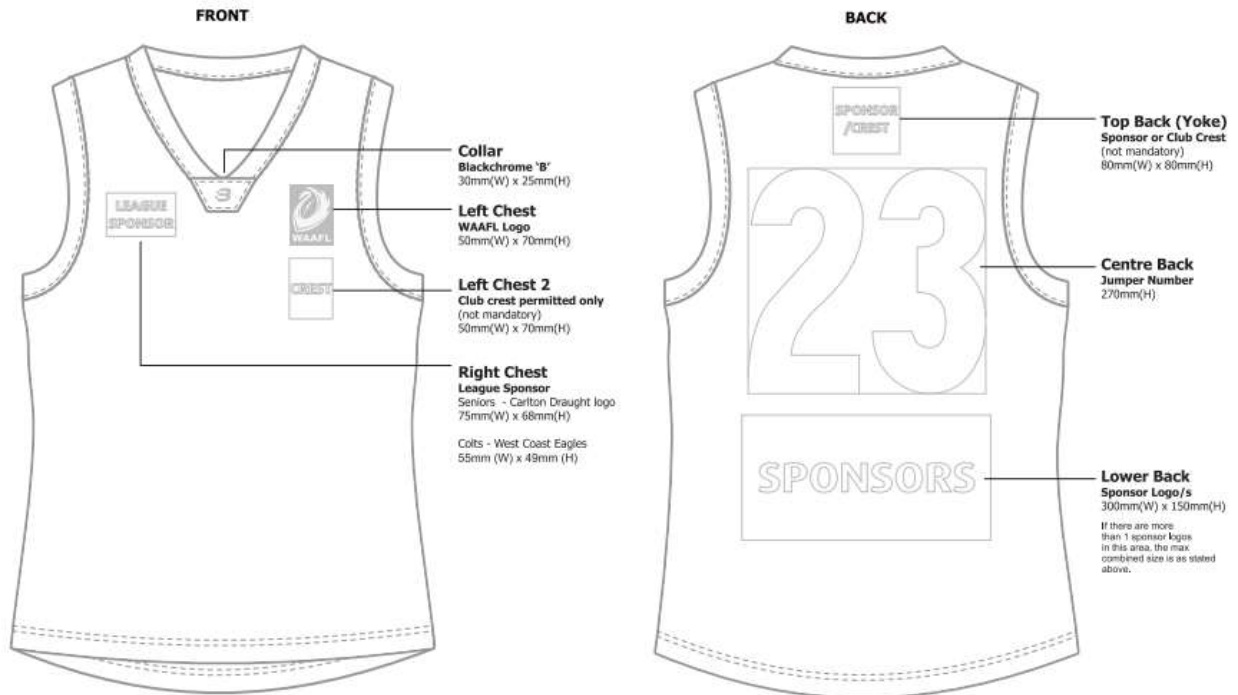
C2.7.5 Soccering the ball

A player is not permitted to deliberately soccer the ball unless the kick is deemed by the field umpire as accidental. Where a player deliberately soccers the ball, the opposing team shall be awarded a free kick.

C2.7.6 Stealing/smothering the ball

A player may attempt to snatch or steal the ball but if unsuccessful and contact is made a free kick will be awarded to the opposing team.

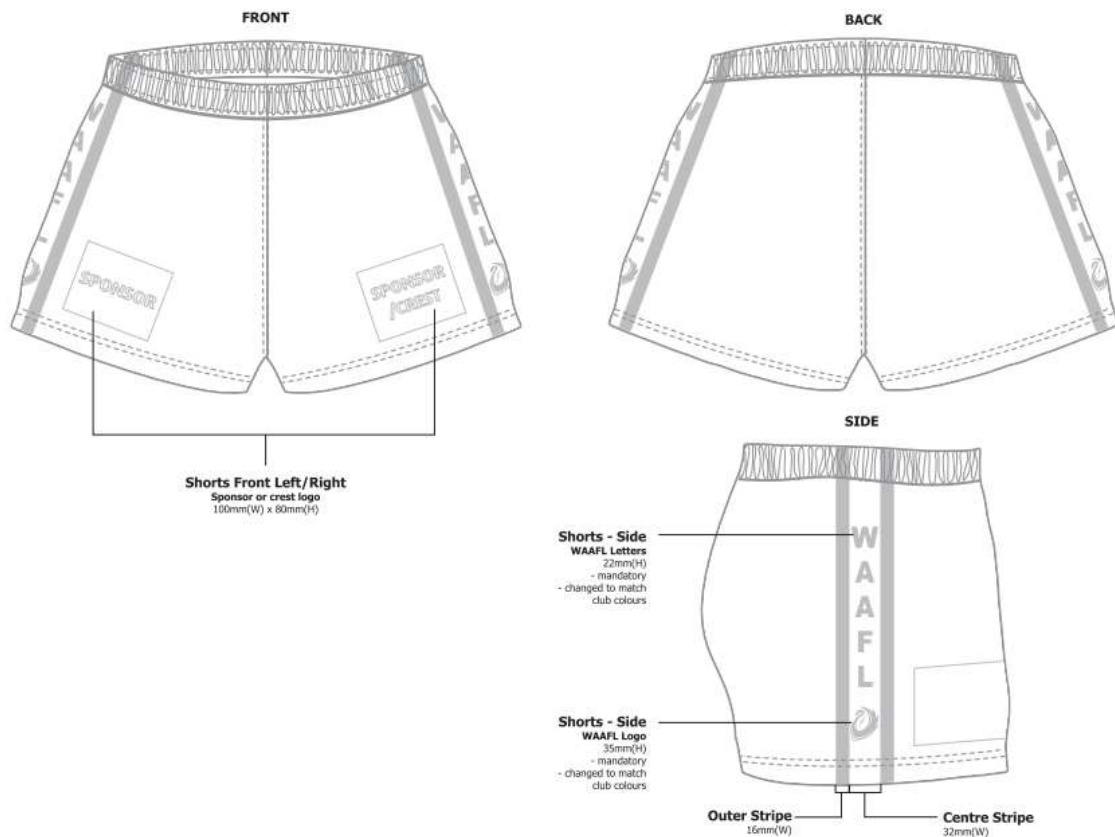
SCHEDULE C1: WOMENS PLAYING UNIFORM – SPECIFICATIONS



LEAGUE SPONSORS



SENIOR WOMENS



SCHEDULE C2: WOMENS SUPPORT PERSONNEL UNIFORM – SPECIFICATIONS



SECTION 2: COMPETITIONS

PART D: ALL ABILITIES (INTEGRATED FOOTBALL)

Part D must be read in conjunction with Part A By-laws.

BY-LAW D2.1 COMPETITION STRUCTURE

- D2.1.1 The controlling body of the competitions is the WAAFL.
- D2.1.2 The WAAFL will conduct an All Abilities competition (Integrated Football).
- D2.1.3 Integrated Football is a restricted competition. Only players with an intellectual disability are permitted to play Integrated Football.
- D2.1.4 A player shall have attained the minimum age of 16 to play in any match or where approved by the General Manager.
- D2.1.5 At his absolute discretion, the General Manager shall determine the grades, the season commencement date and season fixtures for each competition, including the number of teams per grade, and team relegation and promotion.

BY-LAW D2.2 TEAM GRADING, RELEGATION AND PROMOTION

- D2.2.1 Team grading relegation and promotion will be determined at the absolute discretion of the General Manager.
- D2.2.2 Clubs may have more than one team in the one grade.

BY-LAW D2.3 TEAMS

- D2.3.1 A team must consist of between 12 and 18 players who may be on the playing surface at any one time (18-a-side).
- D2.3.2 Each team is permitted a maximum 25 players to play in each match.
- D2.3.3 Where a team can only field between 12 and 17 players, then the opposing team must field the same number of players on the playing surface; *i.e.* even up rule. The remaining opposing players may act as reserves or where agreed by both teams, to be used by the opposing team.
- D2.3.4 Both team managers shall inform the field umpires when the rule is to be applied prior to the commencement of the match.
- D2.3.5 No team is to have more players on the playing surface than the opposing team; this may be due to injury. Accordingly, the opposing team shall adjust their playing numbers to even up.
- D2.3.6 Where a team has less than 12 players and gains players from the opposing team to play a match, the match result will be declared a forfeit.

BY-LAW D2.4 SELECTION OF PLAYERS BETWEEN TEAMS WITHIN A CLUB

- D2.4.1 Where a club's higher grade team has a fixtured "BYE" or "FORFEIT" and three or more higher grade players are selected to play in a lower grade, no more than two of them are permitted to return to the higher grade after playing one match in the lower grade. The remaining players selected may be promoted after having played at least two matches in the lower grade.
- D2.4.2 Lower grade players are permitted to play in a higher grade match on the same weekend or round of fixtures as deemed by the General Manager.
- D2.4.3 Higher grade players are not permitted to play in a lower grade match on the same weekend or round of fixtures as deemed by the General Manager.
- D2.4.4 Where a player has been found to have breached this by-law, his team shall receive the same penalty as playing an ineligible player.

BY LAW D2.5 SCHEDULED START AND PLAYING TIMES

- D2.5.1 The WAAFL shall determine the scheduled start time for each match.
- D2.5.2 Playing times and breaks is:

Four quarters of 12 minutes with no time on, except as permitted at By-law D2.5.6. Quarter-time break 3 minutes, half time break 7 minutes, three quarter time break 3 minutes.
- D2.5.3 Teams are not permitted to leave the playing surface except at the half time break and full-time, or as permitted in these by-laws.
- D2.5.4 A team not ready to commence play within 5 minutes of the scheduled start time shall be fined as prescribed in Schedule A1, unless a suitable explanation for such delay is accepted by the General Manager.
- D2.5.5 A team not ready to commence play within 15 minutes of the scheduled start time shall automatically forfeit the match.
- D2.5.6 Time on**
The duration of a match will incur no time on, except where there is undue delay such as a seriously injured player requiring a stretcher on the playing surface, a melee, a head count, light failure, lightning, or lost or damaged ball. In these circumstances, the field umpires shall signal and/or direct both timekeepers to apply time on. Both timekeepers are to concur on stopping and re-starting time.

Where timekeepers dispute the time, the General Manager at his absolute discretion may determine the result or order the match be replayed at such time and place as he sees fit.
- D2.5.7 A club failing to comply with the scheduled and allocated break times shall be fined as prescribed in Schedule A1.

BY-LAW D2.6 FINALS ELIGIBILITY

- D2.6.1 Eligibility for finals – Integrated football competition**
To be eligible to play finals a player shall play five integrated qualifying matches over five rounds of fixtures for his club in the current year.

BY-LAW D2.7 MODIFIED MATCH CONDITIONS – INTEGRATED FOOTBALL

This by-law outlines match rules modified for development grade matches only. The Laws of Australian Football, AFL Regulations and policies, WAAFL Rules and By-laws shall prevail, unless expressed otherwise in By-law D2.7.

D2.7.1 Playing surface

The ground and goal post requirements are as stated in the Laws of Australian Football, except where both teams agree a shorter playing field be adopted. This may be due to less player numbers or other reasons. In this instance, the use of portable goal posts should be placed on the 50m lines.

D2.7.2 Umpire throwing up of the ball (ball up)

A ball up shall be contested by one nominated player from each team who is only permitted to tap, punch or knock the ball. The opposing team shall be awarded a free kick where a player takes possession of the ball from this contest.

D2.7.3 Out of bounds

In the absence of a boundary umpire and where the ball crosses the boundary line, the field umpire will restart play by bringing the ball inside the boundary line 10 metres and throw the ball up.

D2.7.4 Bouncing the ball

A player is only permitted to bounce or touch the ball on the ground twice after which he must dispose of the ball by kick or handball. Failure to do so shall see the opposing team awarded a free kick.

D2.7.5 Umpire discretion

The field umpire shall use his sole discretion to award a free kick and/or mark in general play, if in his opinion the player made the ball his sole focus; e.g. players of lesser ability may be awarded “effort” free kicks/marks to build confidence and increase participation.

BY-LAW D2.8 COACHING

D2.8.1 A maximum of two coaches per team in designated orange vests are permitted to be on the playing surface during the match to deliver instructions and support players.

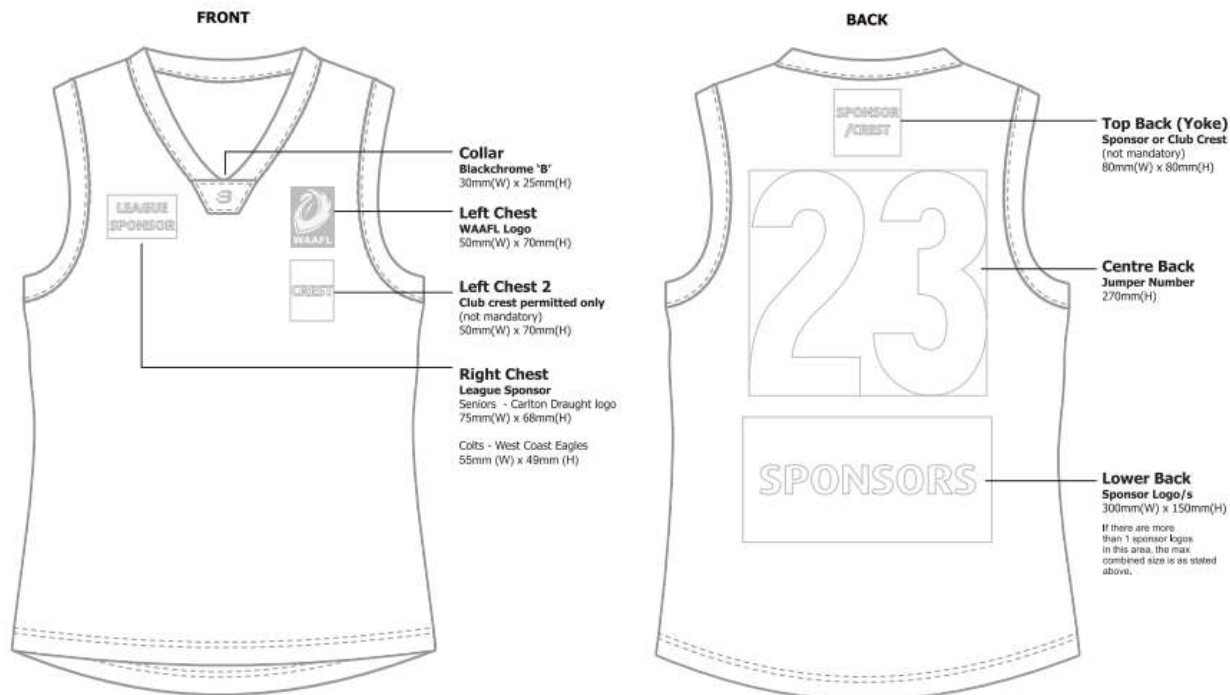
D2.8.2 Prior to the commencement of the match, coaches are to discuss strategies to collectively work towards a fair contest between both teams to maximise participation for all players e.g. flow of the match, players of equal ability to be opposed to each other, players to stay in positions, players encouraged to pick the ball up, dominating players to be rotated for periods of play off the ball to encourage players of lesser abilities to increase participation.

BY-LAW D2.9 UMPIRING

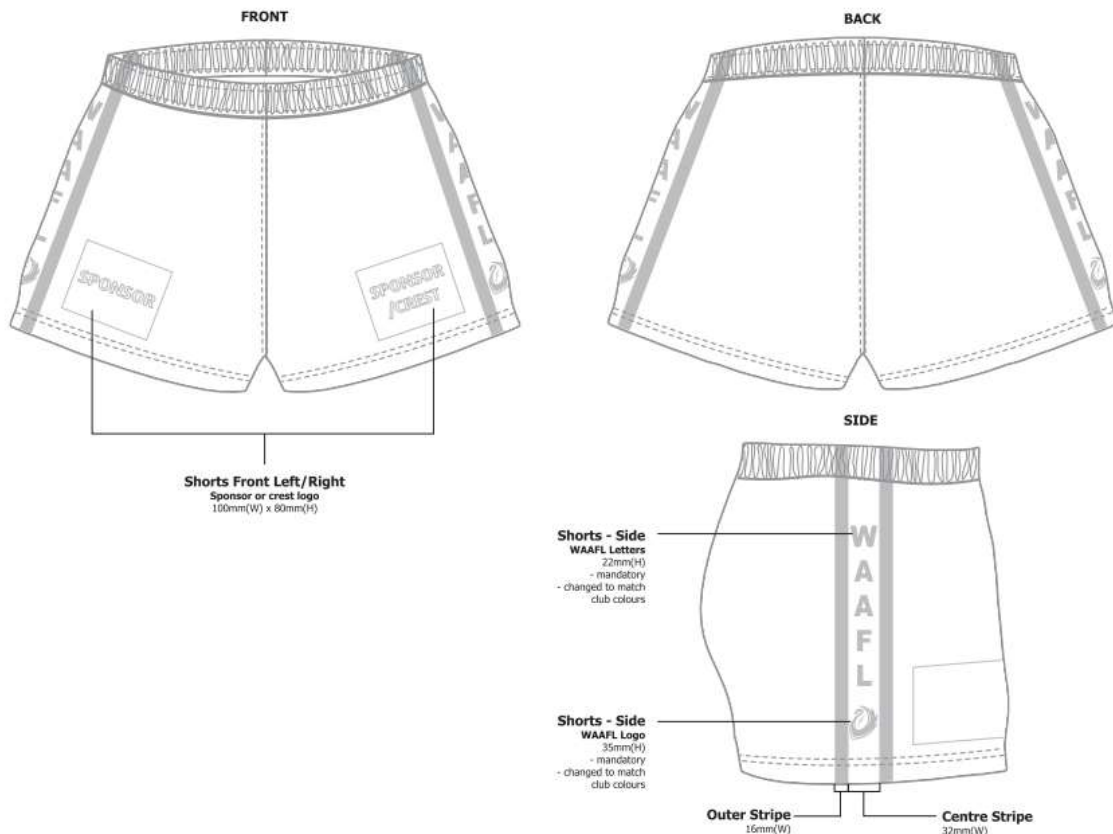
Matches shall be umpired with an emphasis on:

- Encouraging participation from all players.
- Rewarding players who make the football their sole object.
- Keeping the play flowing by awarding free kicks.
- Avoiding scrimmages.

SCHEDULE D1: INTEGRATED PLAYING UNIFORM – SPECIFICATIONS



LEAGUE SPONSORS



SCHEDULE D2: INTEGRATED SUPPORT PERSONNEL UNIFORM – SPECIFICATIONS



SECTION 3: ADMINISTRATIVE PROVISIONS

BY-LAW 3.1 PAYMENT DEFAULT, UNFINANCIAL WITH THE WAAFL

- 3.1.1 Any player, club official or club who fails to pay their respective fees, fines or other payments for which the club is liable under these by laws by the due date or within the prescribed payment terms shall be in default of payment and deemed unfinancial with the WAAFL until such time as the outstanding amount is paid. Late payment penalties may apply.
- 3.1.2 A player or club official unfinancial with the WAAFL is not permitted to participate in any match until the outstanding amount is paid.
- 3.1.3 A club unfinancial with the WAAFL shall forfeit each match and lose its representation to the WAAFL until the outstanding amount is paid.
- 3.1.4 No club may participate in final round matches with a debt owing to the WAAFL.
- 3.1.5 A club expelled from the WAAFL shall lose and forfeit all interest and benefit of the club in the WAAFL, and in funds and property of the WAAFL as from the date of expulsion.

BY-LAW 3.2 CLUB AFFILIATION FEES

Club Affiliation Fees shall be paid in instalments payable by the due date. An instalment not received by the due date shall incur a fine as prescribed in Schedule A1.

BY-LAW 3.3 PAYMENT OF FINES

All fines incurred by a player, club official or club shall be paid by the due date. Fines not paid by the due date shall deem the player, club official or club as unfinancial with the WAAFL and subject to penalties prescribed in By-laws 3.1.2 or 3.1.3 of this Section.

BY-LAW 3.4 GROUND HIRE

- 3.4.1 The total cost of all ground hire, excluding use of lights, for sanctioned matches and in-season training shall be borne equally by all clubs.
- 3.4.2 Clubs shall submit invoices for ground hire no later than the 31st October of the current year. Any invoice received after this date will be the responsibility of the club to pay.
- 3.4.3 The WAAFL will not be responsible for the payment of any ground hire where a club is unfinancial with the WAAFL.

BY-LAW 3.5 AGM MINUTES AND FINANCIAL REPORTS

- 3.5.1 Each club shall submit to the WAAFL its AGM Minutes and audited Financial Reports for the previous year before or with team nominations.
- 3.5.2 Where a club fails to comply with this by-law, the General Manager at his own discretion, may impose a fine, may not accept the club's team nominations for the season and/or may impose match sanctions.

BY-LAW 3.6 CLUB OFFICE BEARERS

Each club shall submit to the WAAFL the names and contact details of each office bearer for the coming year by the due date. Failure to do so will incur a fine as prescribed in Schedule A1.

BY-LAW 3.7 MEMBER CLUB MEETINGS AND COMPULSORY RETURNS

3.7.1 Any club which is not represented at any meeting of the Member Clubs shall be fined as prescribed in Schedule A1.

3.7.2 Any club which does not complete and return to the WAAFL by the due date a request for information stated as a compulsory return shall be fined as prescribed in Schedule A1. The WAAFL may re-issue the request for information whereby the return is subject to the same fine if not complied with.

BY-LAW 3.8 AGREEMENTS AND SPONSORSHIPS

No player, club official or club is permitted to willfully act against a WAAFL agreement, contract and/or sponsorship.

Any player, club official and/or club who willfully acts against a WAAFL agreement, contract and/or sponsorship may be deemed by the General Manager in his absolute discretion to have acted in a manner prejudicial to the good order and management of the WAAFL and subject to By-laws A2.29.11(c) and/or A2.29.11(d).

BY-LAW 3.9 ACT OR OMISSION

The Board may declare any act or omission by a player, club official or club not mentioned in these by-laws to be offences under these by-laws and may declare the penalty for any such offences provided that no penalty shall be imposed until a circular setting forth the offences and penalties shall have been communicated to all clubs.

SECTION 4: SUB BOARDS (COMMITTEES)

Sub Boards or special purpose committees are appointed from time to time and are authorised under Rule 11 of the Rules of the WAAFL.

Sub Boards carry out duties and functions determined by the Board, and when necessary may co-opt the services of other personnel to assist in their functions from time to time.

Expressions of interest may be called from persons interested in being appointed to committees, panels or working groups as and when required.

BY-LAW 4.1 FINANCE AND RISK COMMITTEE (4)

4.1.1 Establish

There will be a Finance and Risk Committee.

4.1.2 Composition

- a) The committee shall comprise a Board member, who shall act as Chair, the General Manager (or his representative) and two appointed persons.
- b) The committee, when in session, shall have a minimum of three committee members.
- c) Any Board Member may attend meetings as a visitor.
- d) The Board will appoint committee members annually.

4.1.3 Authority

- a) The committee shall have the authority to co-opt the services of other persons to provide advice and assistance on specific matters.
- b) The committee shall have authority as delegated by the Board expressed in the Authority and Delegation Policy.
- c) The committee does not have authority or power to make decisions binding on the WAAFL or commit the WAAFL to expenditure.
- d) The committee reports to the Board.

4.1.4 Responsibilities

- a) Convene at least three times per year or as required by the Chair, or as decided by committee members.
- b) Monitor the WAAFL's financial position including preparation and review of the annual operating budget.
- c) Review the annual auditor's report.
- d) Monitor and review the WAAFL's financial and investment policies.
- e) Establish and assess adequate systems of internal control, management of business risks and safeguard of assets.
- f) Report committee meetings to the Board.

BY-LAW 4.2 HERITAGE AND AWARDS COMMITTEE (4)

4.2.1 Establish

There will be a Heritage and Awards Committee.

4.2.2 Composition

- a) The committee shall comprise a Board member, who shall act as Chair, the General Manager (or his representative) and two appointed persons.
- b) The committee, when in session, shall have a minimum of three committee members.
- c) Any Board Member may attend meetings as a visitor.
- d) The Board will appoint committee members annually.

4.2.3 Authority

- a) The committee shall have the authority to co-opt the services of other persons to provide advice and assistance on specific matters.
- b) The committee shall have authority as delegated by the Board expressed in the Authority and Delegation Policy.
- c) The committee does not have authority or power to make decisions binding on the WAAFL or commit the WAAFL to expenditure.
- d) The committee reports to the Board.

4.2.4 Responsibilities

- a) Convene at least three times per year or as required by the Chair, or as decided by committee members.
- b) Make recommendation to the Board regarding Life Membership of the WAAFL and the WA Football Commission.
- c) Make submissions on individuals who have contributed significantly to the WAAFL for Australian Honours and other industry awards.
- d) Make recommendation to the Board regarding Hall of Champion nominations.
- e) Acknowledge and award significant achievements by individuals, clubs or organisations.
- f) To ensure continuity, the Chair shall keep a current and ongoing record of all nominations submitted.
- g) Ensure the safe keeping of all historical information and photos.
- h) Report committee meetings to the Board.

BY-LAW 4.3 COMPETITION INTEGRITY ADVISORY COMMITTEE (6)

4.3.1 Establish

There will be a Competition Integrity Advisory Committee.

4.3.2 Composition

- a) The committee shall comprise a Board member, who shall act as Chair, the General Manager (or his representative), the Competition Integrity Officer and up to three appointed persons. A current player or club official of any WAAFL club are not permitted to serve on the committee.
- b) The committee, when in session, shall have a minimum of three committee members.
- c) Any Board Member may attend meetings as a visitor.
- d) The Board will appoint committee members annually.

4.3.3 Authority

- a) The committee shall have the authority to co-opt the services of other persons to provide advice and assistance on specific matters.
- b) The committee shall have authority as delegated by the Board expressed in the Authority and Delegation Policy.
- c) The committee does not have authority or power to make decisions binding on the WAAFL or commit the WAAFL to expenditure.
- d) The committee shall report to the Board.

4.3.4 Responsibilities

- a) Convene at least three times per year or as required by the Chair, or as decided by committee members.
- b) Provide advice on matters that may undermine the integrity of the competition.

- c) Provide advice on the development of initiatives that promote competition integrity, including but not limited to player welfare, club development and education programs.
- d) Report committee meetings to the Board.

BY-LAW 4.4 INTEGRATED FOOTBALL ADVISORY COMMITTEE (6)

4.4.1 Establish

There will be an Integrated Football Advisory Committee.

4.4.2 Composition

- a) The committee shall comprise a Board member, who shall act as Chair, the General Manager (or his representative) and up to four appointed persons.
- b) The committee, when in session, shall have a minimum of three committee members.
- c) Any Board Member may attend meetings as a visitor.
- d) The Board will appoint committee members annually.

4.4.3 Authority

- a) The committee shall have the authority to co-opt the services of other persons to provide advice and assistance on specific matters.
- b) The committee shall have authority as delegated by the Board expressed in the Authority and Delegation Policy.
- c) The committee does not have authority or power to make decisions binding on the WAAFL or commit the WAAFL to expenditure.
- d) The committee shall report to the Board.

4.4.4 Responsibilities

- a) Convene at least three times per year or as required by the Chair, or as decided by committee members.
- b) Provide advice and feedback on the development and operations of the Integrated Football competition.
- c) Report committee meetings to the Board.

BY-LAW 4.5 FEMALE FOOTBALL ADVISORY COMMITTEE (6)

4.5.1 Establish

There will be a Female Football Advisory Committee.

4.5.2 Composition

- a) The committee shall comprise a Board member, who shall act as Chair, the General Manager (or his representative) and up to four appointed persons.
- b) The committee, when in session, shall have a minimum of three committee members.
- c) Any Board Member may attend meetings as a visitor.
- d) The Board will appoint committee members annually.

4.5.3 Authority

- a) The committee shall have the authority to co-opt the services of other persons to provide advice and assistance on specific matters.
- b) The committee shall have authority as delegated by the Board expressed in the Authority and Delegation Policy.
- c) The committee does not have authority or power to make decisions binding on the WAAFL or commit the WAAFL to expenditure.
- d) The committee shall report to the Board.

4.5.4 Responsibilities

- d) .
- e) Report committee meetings to the Board.

SECTION 5: AWARDS AND HONOURS

BY-LAW 5.1 LIFE MEMBERSHIP

- 5.1.1 Life Membership of the WAAFL shall be awarded in accordance with Rule 5.1(c) of the Constitution of the WAAFL.
- 5.1.2 The Board may receive nominations from the WAAFL's Heritage and Awards Committee or clubs, as defined in Rule 5.1 of the Constitution of the WAAFL.
- 5.1.3 The recommendation from the Board to an AGM shall consider an individual's service to the WAAFL including but not limited to years of service, the number and types of positions held by the individual over the period and the demands of these positions.

BY-LAW 5.2 PLAYER MILESTONE RECOGNITION

- 5.2.1 Individuals who have played at least 150 matches in the WAAFL are entitled to be awarded a 150 Match Card. A 150 Match Card entitles the individual to free entry to all WAAFL Finals and state representative matches. To gain free entry, the individual shall display the match card on entry to the ground.
- 5.2.2 Individuals who have played 200, 300, 400 and 500 matches in the WAAFL are entitled to be awarded respective Match Recognition Certificates.
- 5.2.3 Clubs must make application to the WAAFL for player milestone recognition.

BY-LAW 5.3 CHAMPION CLUB AWARD (RON WEBSTER MEMORIAL TROPHY)

- 5.3.1 The Champion Club award will be determined by on-field and off-field performance on the club's senior teams.
- 5.3.2 On-field: Based on the club's highest grade League and Reserve teams for the year, the club shall receive 2 points for each qualifying round win, and 1 point for each qualifying round draw, and will lose 2 points for each player who is found guilty of reportable offence, 1 point for each Yellow Card issued.
- 5.3.3 Off field: Clubs will receive 2 points for each key meeting attended, 1 point for each fee instalment received by the due date, 1 point for each compulsory return submitted by the due date, and will lose 1 point for every \$25 accumulated in fines.
- 5.3.4 The club with the highest tally of points at the conclusion of the qualifying rounds shall be recognised as the Champion Club for that year and awarded the Ron Webster Memorial Trophy.

BY-LAW 5.4 CHAMPION COLTS CLUB AWARD (T. K. NAYLOR TROPHY)

- 5.4.1 The Champion Colts Club award will be determined on the club's colts teams.
- 5.4.2 On-field: Based on the club's highest grade colts team, the club shall receive 2 points for each qualifying round win, and 1 point for each qualifying round draw; and will lose 2 points for each player who is found guilty by the WAAFL of an offence worthy of a suspension during the qualifying rounds, and 2 points for each Yellow Card issued.
- 5.4.3 Off field: Clubs will receive 2 points for each key meeting attended, 1 point for each fee instalment received by the due date, 1 point for each compulsory return submitted by the due date, and will lose 1 point for every \$25 accumulated in fines.
- 5.4.4 The club with the highest tally of points at the conclusion of the qualifying rounds shall be recognised as the Champion Colts Club for that year and awarded the T. K. Naylor Trophy.

BY-LAW 5.5 PREMIERSHIP PENNANT AND TROPHIES

5.5.1 Mens, colts and womens competitions

- a) The winner of each respective grade grand final shall be Premiers for that year and awarded a Premiership Pennant, and where named, recorded on a perpetual trophy.
- b) Perpetual Trophies:

<u>GRADE</u>	<u>PREMIERSHIP TROPHY</u>
A Grade Mens	Sandover Shield
B Grade Mens	D.R. Baker Cup
Phil Scott Colts	C.J. Veryard Cup
Drew Banfield Colts	C.R. Gibson Cup

5.5.2 All Abilities (Integrated) football competition

The winner of the integrated football competition grade grand final shall be Premiers for that year and awarded a Premiership Pennant and the P. Grosser Cup.

BY-LAW 5.6 MEDALS FOR OUTSTANDING PLAY

5.6.1 Competition Medals

- a) Except for All Abilities (Integrated) and women development grades, a fairest and best player(s) shall be awarded in each grade for the year.
- b) To determine the *best* player for a grade; the field umpires will confer after each qualifying round match and award 3 votes, 2 votes and 1 vote to the players they regard as the best, second best and third best in the match respectively.
- c) Votes are confidential.
- d) At the conclusion of the qualifying rounds the votes from each match are tallied by the WAAFL and the player(s) with the highest number of votes is awarded the respective grade's medal subject to eligibility.
- e) The *fairest* component of the medal is achieved by making ineligible any player who is guilty of a reportable offence worthy of a match suspension during the qualifying rounds in the year.
- f) An ineligible player cannot win, place or be classified in the final medal rankings regardless of the number of votes he has received.
- g) Umpires cast their votes for each match independent of eligibility criteria of the players; *i.e.* umpires can cast votes for players who have already been suspended during that year if they perceive them to be amongst the best on the ground.
- h) The fairest and best player(s) in the A Grade Mens for the year shall be awarded the C.J. Jamieson Medal.
- i) The fairest and best player(s) in A Reserves Mens for the year shall be awarded the K. Mathews. Medal.
- j) The fairest and best player(s) in the B Grade Mens for the year shall be awarded the T.R. Howard Medal.
- k) The fairest and best player(s) in the Phil Scott Colts for the year shall be awarded the N. Donaldson Medal.

5.6.2 Grand Finals

- a) The player judged by the field umpires as the best on ground in the A Grade Mens Grand Final for the year shall be awarded the B.J Giles Medal.
- b) The player judged by the field umpires as the best on ground in the A Reserves Mens Grand Final for the year shall be awarded the S. Miller Medal.

- c) The player judged by the field umpires as the best on ground in the B Grade Mens Grand Final for the year shall be awarded the N.E Browne Medal.
- d) The player judged by the field umpires as the best on ground in the Phil Scott Colts Grand Final for the year shall be awarded the Greg Maskiell Medal.
- e) The players judged by the field umpires as the best on ground in all other grade Grand Finals for the year shall be awarded a medal.
- f) The winning players in all grade Grand Finals for the year shall be awarded a premiership medal.
- g) The umpires officiating in all grade Grand Finals for the year shall be awarded a recognition medal.

5.6.3 State Representative Matches

The player judged by the Head Coach as the best player in the U23s mens state program for that year shall be awarded the L.A. Tetley Award.

BY-LAW 5.7 LEADING GOAL KICKER AWARDS

The WAAFL shall award a recognition medal to the player(s) with highest number of goals kicked at the end of the qualifying rounds in A Grade Mens, B Grade Mens and A Grade Womens.

BY-LAW 5.8 AWARDS FOR SERVICE/SUPPORT

Awards of Service or Support may be granted to an individual, company or group who have contributed outstanding service or support to the WAAFL as seen fit by the Heritage and Awards Committee or Board.

BY-LAW 5.9 ADMINISTRATOR OF THE YEAR

- 5.9.1 The Administrator of the Year shall be awarded by the Heritage and Awards Committee to an individual who has contributed significantly to the effective administration of the club and the WAAFL for the year.
- 5.9.2 On recommendation from the WAAFL's staff, the Heritage and Awards Committee shall consider an individual's performance to their club including but not limited to the types of positions held by the individual over the period and the demands of these positions.

BY-LAW 5.10 PRESIDENT'S AWARD

- 5.10.1 The President's Award shall be awarded by the WAAFL President to an individual who or club which has displayed the qualities of the Spirit of the Game.
- 5.10.2 The WAAFL President may accept recommendations from individuals, clubs, WAAFL staff and the Heritage and Awards Committee.

BY-LAW 5.11 COACH OF THE YEAR

- 5.11.1 The Coach of the Year shall be awarded by the Heritage and Awards Committee to an individual who has contributed significantly to coaching in the WAAFL for the year.
- 5.11.2 On recommendation from the WAAFL staff, the Heritage and Awards Committee shall consider an individual's performance to their club including but not limited to their team's performance, player retention and game environment throughout the season.

SECTION 6: REPRESENTATIVE TEAMS

BY-LAW 6.1 REPRESENTATIVE TEAMS

- 6.1.1 The WAAFL will field representative teams as and when approved by the General Manager.
- 6.1.2 The coaches for the respective state teams will select the players to train and play.
- 6.1.3 Any player invited to attend state team training and who does not attend within the specified time may have his registration cancelled by the General Manager.
- 6.1.4 Any player selected to play in a representative match, if played on a Sunday is ineligible to play for his club team on the Saturday preceding.
- 6.1.5 Any player selected to play in a representative match who does not attend such match without reasonable explanation as determined by the General Manager will be ineligible to play for his club for the following two matches.

BY-LAW 6.2 STATE COACHES AND SUPPORT PERSONNEL

- 6.2.1 State coaches and support personnel will be appointed on terms and conditions approved by the General Manager.
- 6.2.2 Appointments for each representative team may include:
 - 1 x Head Coach
 - Up to 4 Assistant Coaches
 - 1 x Property Manager
 - 1 x Runner
 - 1 x Physiotherapist/Doctor
 - 1 x Trainer

The General Manager shall appoint a Team Manager.

BY-LAW 6.3 STATE COACH SELECTION

- 6.3.1 All coaching positions are to be advertised via website and other appropriate means.
- 6.3.2 Applicants should be able to demonstrate compliance with or experience/knowledge in the following:
 - Minimum Level 1 AFL Coaching Accreditation.
 - Demonstrated commitment to coach education.
 - Experience in coaching talented athletes within a football environment.
 - Ability to develop a close rapport with WAAFL coaches.
 - Understanding of the WAAFL football structure and WA Talent Player Pathway.
 - Demonstrated understanding of the philosophies that underpin the development of talented athletes.
 - Outstanding personal characteristics.
- 6.3.3 Suitable candidates will be interviewed by a panel consisting of the following:
 - General Manager (or his representative)
 - WAFC High Performance Coach or equivalent
- 6.3.4 Successful applicants will be appointed for the following terms:
 - State U23s: The next triennial series with a yearly review and renew process
 - State 19s: Yearly appointment
 - State Integrated: Yearly appointment

BY-LAW 6.4 STATE JUMPER

The design of the state jumper shall be gold with a black swan insignia on the front, together with any sponsor logos.

BY-LAW 6.5 STATE GAME UMPIRES

- 6.5.1 With agreement from other states, the WAAFL will supply one field umpire, two boundary umpires, two goal umpires and an emergency umpire for all home matches.
- 6.5.2 When playing away the WAAFL will supply one field umpire for the match.

BY-LAW 6.6 FINANCIAL CONTRIBUTION

The WAAFL will levy participants selected or appointed in a representative team or tour as determined by the General Manager.

Players

Umpire(s)

1 x Head Coach

Up to 4 Assistant Coaches

1 x Property Manager

1 x Runner

1 x Physiotherapist/Doctor

1 x Trainer

1 x Team Manager

1 x Tour Manager

Board members

AAFC Delegates

SECTION 7: APPLICATION FOR MEMBERSHIP (NEW CLUBS)

PART 6: This Section is renumbered and is referred to as Part 6 in the WAAFL Constitution.

BY-LAW 7.1 PROBATIONARY CLUB

- 7.1.1 Subject to the WAAFL Rules and these by-laws, a Probationary Club is considered a member club as defined in Rule 5.2 of the Constitution of the WAAFL.
- 7.1.2 A club seeking to apply as a member club of the WAAFL must first be accepted as a Probationary Club.
- 7.1.3 Applications for Probationary Club status may be accepted or rejected by the Board.
- 7.1.4 A Probationary Club shall all rights afforded to it as a member club, except it shall:
 - a) Not have voting entitlements at a general meeting of the WAAFL.
 - b) Not be entitled to property, grants, funds and sponsorships offered by the WAAFL.
- 7.1.5 A probationary membership may be up to two years to ensure the club is viable and can field senior teams before its membership will be considered by the Board for a member club as defined in Rule 5.1 of the Constitution of the WAAFL.
- 7.1.6 Where a Probationary Club does not field a team in the year, its probationary status will lapse, and the club will lose and forfeit all interest and benefit of the club in the WAAFL.
- 7.1.7 The Board can terminate the membership of a Probationary Club at any time.

BY-LAW 7.2 APPLICATION FOR MEMBERSHIP (NEW CLUB)

- 7.2.1 Applications from a club for admission to the WAAFL shall be in writing, accompanied by a \$2000 entrance fee and an additional \$500 per team to be nominated which shall be refunded should the club not be granted probationary membership.
- 7.2.2 The final date for application for membership shall be 1 September each year.
- 7.2.3 The application shall include:
 - a) The name of the incorporated body (club).
 - b) The names, addresses and contact details of the club office bearers.
 - c) The names, addresses and contact details of the club coaches.
 - d) A list of intended players stating their age and known club.
 - e) The proposed playing uniform of the club.
 - f) The position and description of playing grounds, changing rooms and clubrooms and whether such grounds and facilities are shared or not, and if so, upon what basis and with whom.
 - g) The number of teams from the club desiring to compete in the WAAFL.
 - h) Copy of its financial plan and budget for the nominated year of entry.
 - i) Copy of the most recent year's financial audit.
 - j) Any other relevant information including history, financial reports and tribunal matters.
 - k) Letter of support from the WAFC District.

- l) Letter of support from the Local Government Authority confirming ground and facility access for training and fixtures.
- m) Evidence the club has completed the Bronze Level of the AFL Quality Club Program.
- n) Letter of support from relevant junior club(s) – if nominating a colts team

7.2.4 Before an application for membership is considered by the Board, existing member clubs which may be affected by the applicant's admission will be invited to comment on the application.

7.2.5 The Board has the authority to place conditions on a new club entering the competition e.g. restriction on the number of teams the club can nominate; restrictions on the number of players that can be cleared from other WAAFL clubs.

7.2.6 For the purpose of considering an application for membership, the Board may prior to determining whether such club should be admitted to the WAAFL examine and inspect the club records, grounds, changing rooms and facilities. The Board may make any recommendations as it sees fit concerning such club's grounds and or facilities.

7.2.7 If a member club wishes to change their home ground from that which has been previously approved, they must obtain permission from the General Manager.

7.2.8 The Board shall determine the club's uniform including its away match uniform, and any other matter relevant to the club's competition.

7.2.9 In the event of more than one club desiring the same uniform and colours the Board shall determine the uniform and colour in accordance with the following priorities:

- a) The club whose uniform was approved by the WAAFL first.
- b) Time of application for admission.

Upon the Board determining the uniform of the club, such uniform shall be the registered uniform of that member club.

7.2.10 Such application shall be dealt with by the Board and if the club is admitted as a member by a resolution carried by a majority present, the club and all its players, officials and members shall in all respects be bound by and conform to the by-laws and policies of the WAAFL.